

Also available:-

Ductable 3 Phase Fan Heaters:-

FF13 415v - 16A 415v 3PH + Earth Supply (No Neutral required.)

FFHT32 415v - 32A 415v 3PH + Earth Supply (Neutral required.)

FF42 415v - 63A 415v 3PH + Earth Supply (No Neutral required.)

Industrial, high capacity air movers (Fans):-

MB30 110v & 230v/240v

MB50 110v & 230v/240v

MB2000 110v & 230v/240v

Industrial Portable Air Conditioning Units:-

MCM230 230v – 23,000 BTU Mono Bloc

MCM280 230v – 28,000 BTU Mono Bloc

MCM350 230v – 35,000 BTU Mono Bloc

MCWCS 250 230v – 25,000 BTU Water Cooled Split – can be piped 30 metres.

*Also VF250, VF300 and VF600 Portable Industrial Fume Extractors.

MB50/30

INDUSTRIAL ELECTRIC FAN



PRODUCT MANUAL

Models Covered:

MB50 & MB30

230v 13A Plug ~ 110v 16A Plug

GENERAL SAFETY

- This equipment should only be used by a competent person who has read and fully understood these instructions.
- Never operate this equipment if you are ill, feeling tired, or are under the influence of alcohol or drugs.
- Always switch OFF and unplug the equipment when not in use.
- Check condition of the equipment before use. If unit is showing signs of damage, contact your supplier immediately.

WARNINGS

These instructions should be read by:

- The specifying engineer - The installation engineer.
- The user - The service engineer.

- Failure to follow these instructions may result in risk of personal injury or damage to the equipment.
- Damage due to a failure to follow these instructions will invalidate the warranty.
- The appliance must be commissioned & serviced by qualified engineers in compliance with local regulations.
- There are no user controls inside the appliance casing.
- Do **not** place anything on top of the appliance.
- Do **not** use near water, for example in the vicinity of pool, bath or shower.
- An air gap of at least 300mm should be allowed around the unit to ensure a clear airflow. Do **not** site the unit close to soft fabrics or combustible materials.
- Do **not** disconnect the appliance from the supply under load.
- For internal use only. Do **not** use out of doors.
- Extension cables should be correctly rated for the load, fully unwound and never run through water or over sharp edges.
- In order to avoid overheating – do **not** cover the fan.
- The appliance must be switched off and disconnected from the power supply before any maintenance or remedial work is carried out on it **including** cleaning.

 **NEVER** cover the air inlet or outlet! 

Notes.

MACHINE SPECIFICATIONS	
MODEL	MB50 MB30
WEIGHT	17 kg 10 kg
IP RATING	IP20
MAXIMUM CURRENT	MB50 230v – 1.25A 110v – 2A MB30 230v – 0.65A 110v – 1.2A
POWER SUPPLY	MB50/30 230V – 230V 1 PHASE 50Hz MB50/30 110V – 110V 1 PHASE 50 Hz

Standards Applied:-

EN 60335-1:2012+A11:2014

EN 60335-2-80:2003+A2:2009

EN 55014-1: 2017

EN 55014-2: 2015

EN 61000-3-2: 2019

EN 61000-3-3: 2008

EN 12100:2010

Use of a 30mA RCD is recommended.

Appliance is intended for indoor use only.

The MB50/30 is designed to operate at room temperature. It is **NOT** rated for use at extreme high and low temperatures.

#Always disconnect the power supply and wait for the fan blades to stop turning before moving the fan.

Specifications:

The MB50/30 is a single phase industrial electric fan. It is supplied as a 230v machine or a 110v machine.

The 230v appliance is connected to a 13Amp 50Hz power supply and comes fitted with the appropriate UK mains plug.

The 110v appliance is connected to a 16Amp 110v 50Hz supply and comes fitted with the appropriate plug.

The MB50/30 is fitted with a high quality rotor fan motor.

The MB50/30 is fitted with an indicator lamp and speed control switch as standard.

*If connecting a 110v machine to a transformer, please ensure it is CONTINUOUSLY RATED.

Setup and operation:

To start:

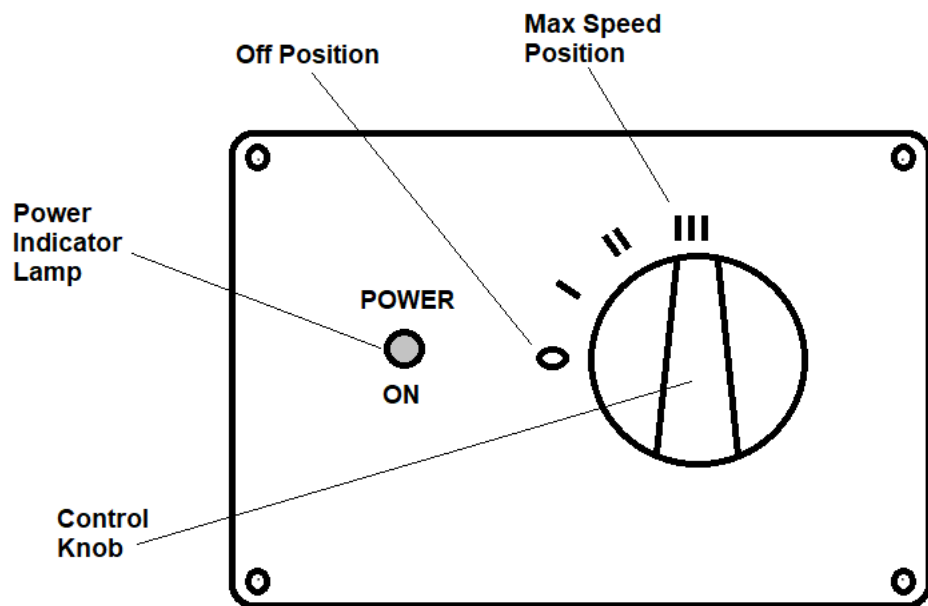
- Please note! The control panel is at the front of the appliance.
- Site the appliance on a firm level surface.
- Connect to the appropriate power supply.
- Turn the control knob to I.
- Set the control knob to slow (I), medium (II) or fast (III)

To stop:

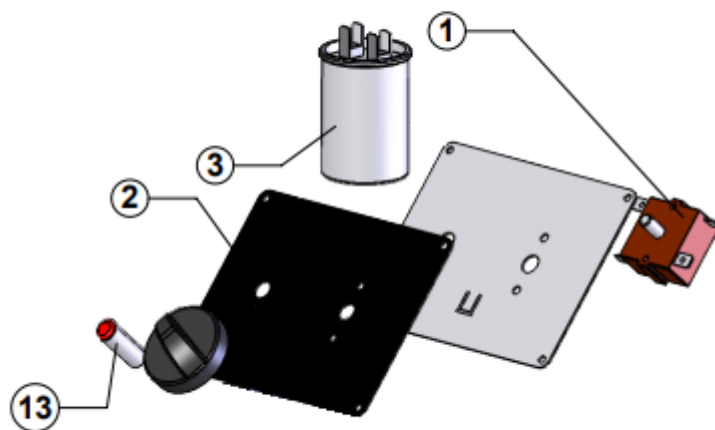
- Turn the control knob fully anti-clockwise to 0.
- If the fan is not in regular daily use, disconnect from the power supply.

To adjust angle:

- Loosen the hand wheels on both sides of the stand.
- Set the angle of the fan to the desired position.
- Tighten up the hand wheels on both sides of the fan.



Control Panel - Exploded



Spare parts:

	PARTS LIST MB50 MB30	110v	230v
1	Switch	FS001	FS001
2A	Control Plate	CP50/30	CP50/30
3	Capacitor	CPR50 CPRY30	CPRB50 CPRB30
4	Front Grill	FG50 FG30	FG50 FG30
5	Fan Motor	FM50110 FM30110	FM50230 FM30230
6	Power Lead	L110150	L230125
7	Stand	TBST50 TBST30	TBST50 TBST30
8	Hand Wheel	HW001	HW001
9	Nylon Washer	NYW01	NYW01
10	Saddle Washer	SADWA01	SADWA01
11	Moulded Body	PB50G PB30G	PB50G PB30G
12	Cable Gland c/w Lock Nut	CG125	CG125
13	Indicator Lamp	IL001	IL001
2B	Control Plate Label	PL50/30	PL50/30

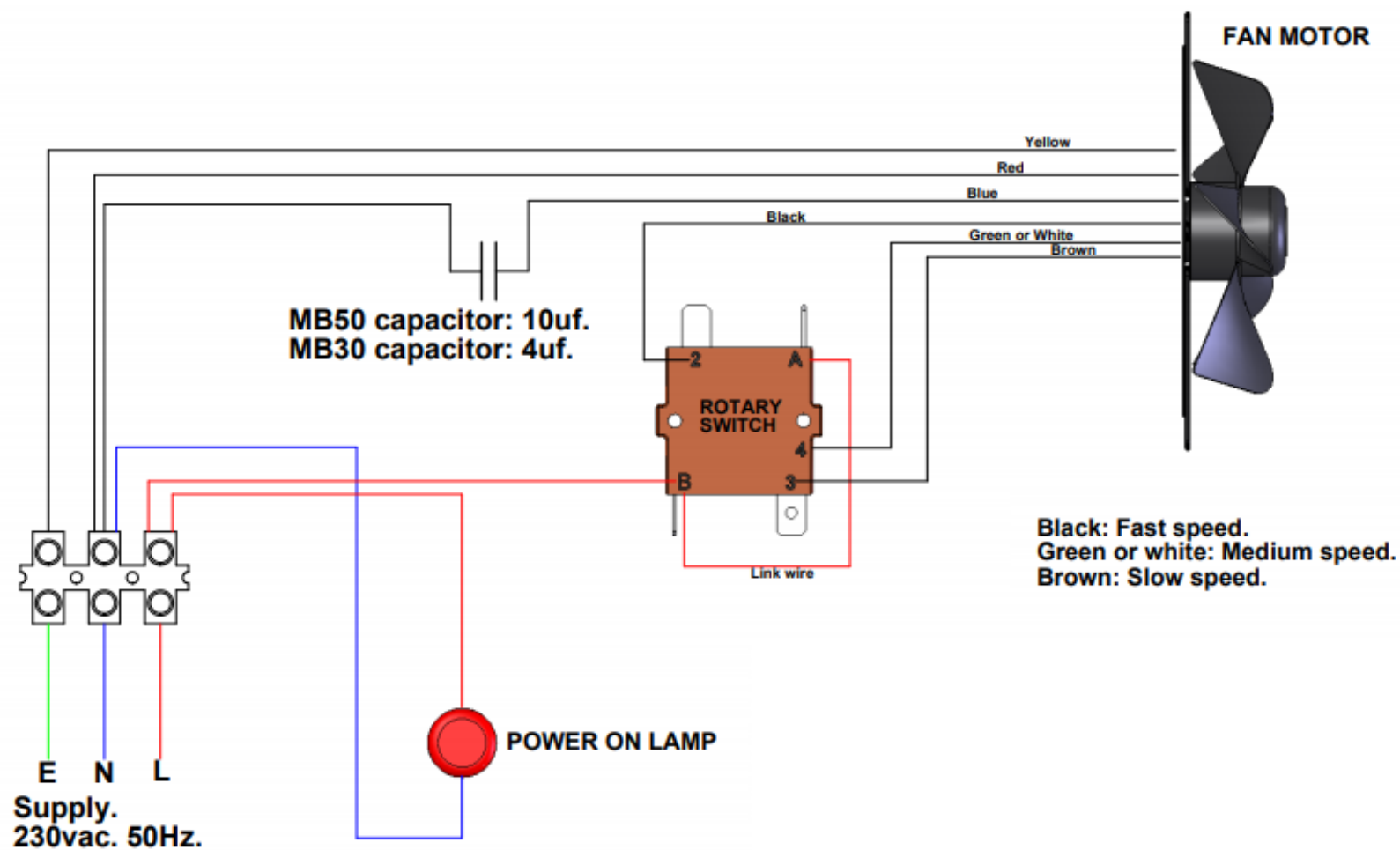
Maintenance:

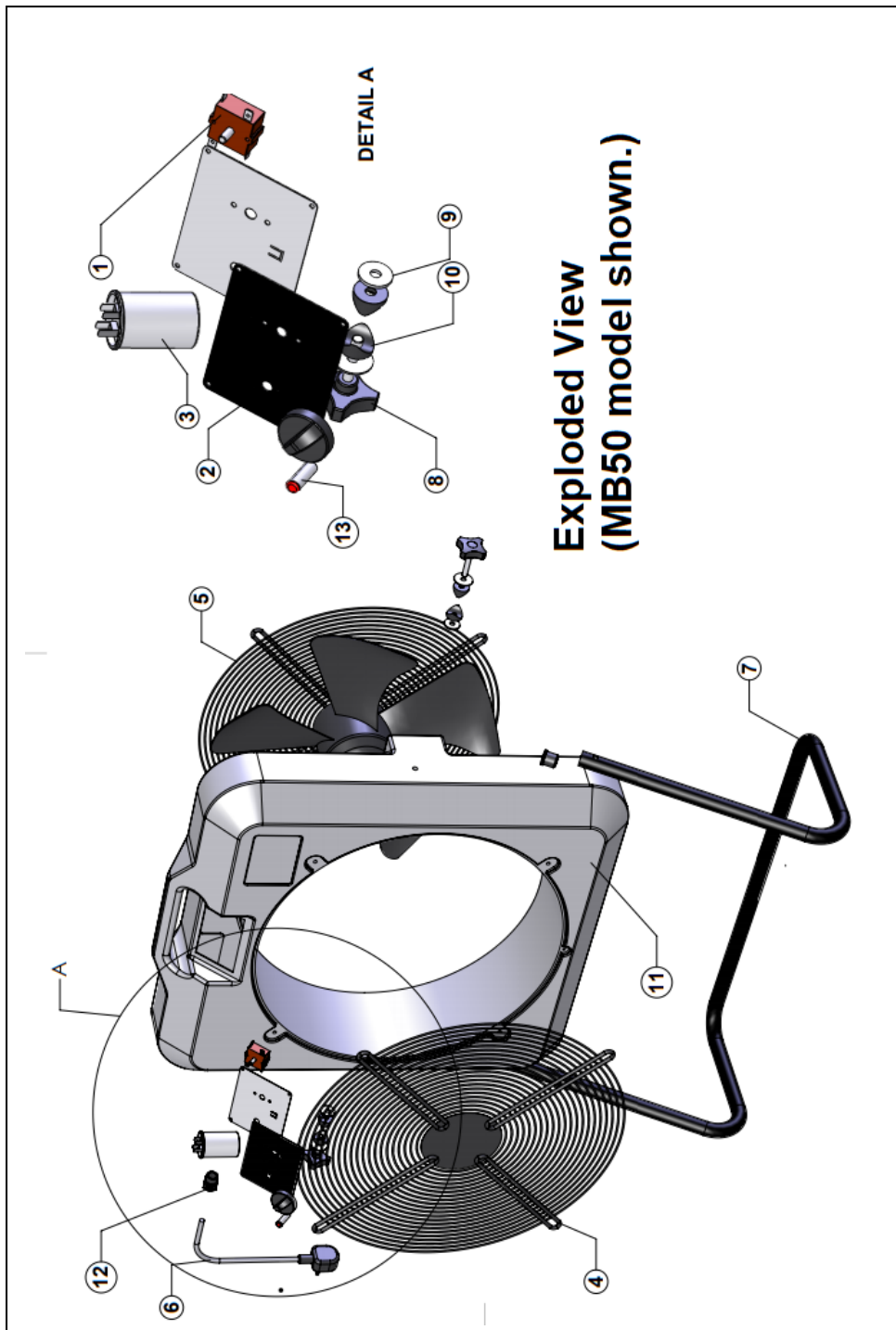
Fan motor and switch gear are not customer serviceable components.

General maintenance should include regular inspection of:

1. Mains cable. Check for signs of damage to the insulation and replace if necessary.
2. Air intake & outlet grills: Ensure grills are free from accumulated debris. Blow out with compressed air if required.
3. Fixings: Check all fixings are present and secure.

MB50 & 30. 230V & 110v WIRING DIAGRAM





Fault finding:

FAULT	POSSIBLE CAUSE	SOLUTION
NO OUTPUT. FAN MOTOR NOT RUNNING.	FAN NOT SWITCHED ON.	CHECK ALL SWITCHES ARE ON.
	SPEED CONTROL INCORRECTLY SET.	TURN KNOB FULLY CLOCKWISE.
	POWER SUPPLY INTERRUPTED.	CHECK POWER SUPPLY.
	FAULTY SWITCH.	CHECK SWITCH AND REPLACE IF NECESSARY.
	FAULTY CAPACITOR	CHECK CAPACITOR AND REPLACE IF NECESSARY.
POOR AIRFLOW	GRILLS ARE CLOGGED WITH DEBRIS	CLEAN THE GRILLS WITH COMPRESSED AIR.
	LOW VOLTAGE AT POWER SUPPLY	CHECK POWER SUPPLY
IT SHOULD BE NOTED THAT THIS MACHINE IS INTENDED FOR USE AT ROOM TEMPERATURE. USE IN EXTREMELY HOT OR COLD ENVIRONMENTS IS NOT RECOMMENDED.		

Ducting

- These fans are **NOT** suitable for ducting at any length.
- Using ducting with these fans will invalidate the warranty.