



Installation & operation guide for screen-zone Warm Air Curtains

Model

HE7433 & HE8326

For use with single or 3 phase supply

All electrical appliances produced by the Company are guaranteed for one year against faulty materials or workmanship. This applies only if the appliance has been used for purposes in accordance with the instructions provided and has not been connected to an unsuitable electricity supply, or subject to misuse, neglect, damage or modified or repaired by any person not authorised by us. This guarantee is offered to you as an extra benefit and does not affect your legal rights.

The correct electricity supply voltage is shown on the rating label attached to the appliance.

Reasonable care has been taken to ensure that this guide is accurate at the time of printing. In the interest of progress the Company reserve the right to vary specifications from time to time without notice.

Overview

Please read this guide carefully and retain for future use and maintenance. This appliance has been designed and manufactured to the highest international standards, however, care must be taken for optimal results and safety. This appliance also meets the requirements of EU Directive 2004/106/EC for EMC and 2009/125/EC Directive.

Safety & Care

The appliance is not intended for use by persons (including children) with reduced physical, sensory or mental capabilities or lack of experience and knowledge unless they have been given supervision or instruction concerning use of the appliance by a person responsible for their safety. Children should be supervised to ensure that they do not play with the appliance.

Warning

- Do NOT site the appliance in a corner.
- Do NOT handle the appliance with wet hands.
- Do NOT use the appliance in workshops or rooms where excessive dust is generated or present.
- Ensure that nothing is pushed into any aperture of this appliance.
- Do NOT touch outlet grille when the appliance is in use.
- Do NOT cover or restrict any aperture of the appliance when in use.
- Do NOT use the appliance if damaged.
- Do NOT leave the appliance unattended where young children are present.

Models

This unit is a 1035mm 6 or 9kW air curtain heater designed for mounting above entrances but may also be used as a space heater. It is supplied complete with remote mounting control box.

Thermal cut out

The units are protected from overheating in the event of fan failure or an obstruction of the free airflow, by thermal cut outs. If this happens the thermal cut outs effectively switch off the

appliance. The appliance will not operate until the thermal cut outs are manually re-set. This should be done by a competent electrician.

Maintenance

ALWAYS ENSURE THAT THE MAIN EXTERNAL ELECTRICITY SUPPLY IS SWITCHED OFF BEFORE SERVICING OF THIS SCREEN-ZONE HEATER.

To obtain the best results from the heater it is essential to avoid the accumulation of dust and dirt within the unit and on the inlet and discharge grilles. Regular cleaning is necessary with particular attention to the fronts and backs of the fan motor blades. Cleaning of the fan is best carried out with a soft brush.

Electrical connections

The heater is suitable for connection to a 400-415 volt 3 phase 50Hz supply. With modification the unit can also be on a 230-240 volt 50Hz supply. For 230-240 volt single phase operation, link terminals L1, L2 and L3 on the main input terminal block and connect the supply to L. The heater consumes approximately 6 or 9kW on the full heat setting. The connections to be made between the heater and the remote control box are shown on the next page. An earth terminal is adjacent to the terminal block and is clearly marked with the symbol \perp . For safety reasons a good earth connection must ALWAYS be made to the heater and control box.

The unit must be wired in accordance with IEE regulations for the Electrical Equipment of Buildings and the installer should ensure that a suitable fused isolating switch is connected in the mains supply.

Controls

The unit is designed to provide 2 levels of heat, 4.5kW and 9kW for HE7433, 3kW and 6kW for HE8326 together with 2 fan speeds, normal and boost. The remote control box houses 4 single pole switches to give the following functions:

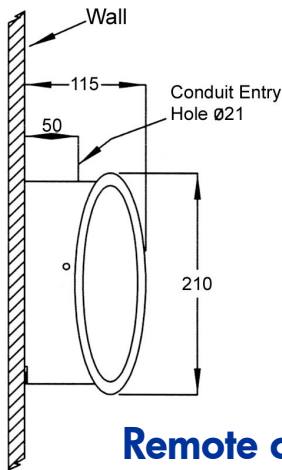
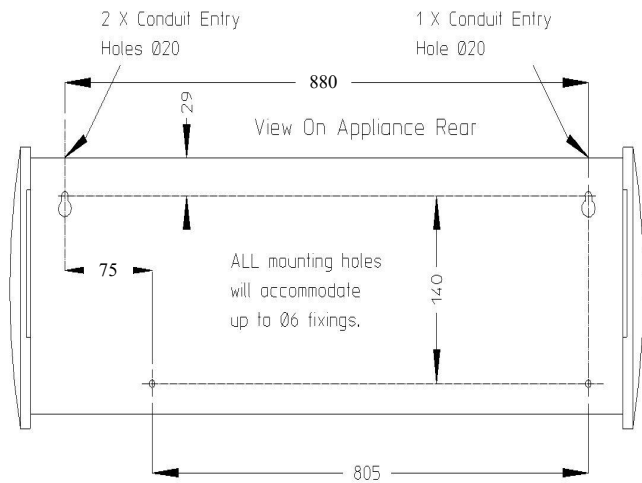
SWITCH 1 (left-hand)	ON/OFF
SWITCH 2	FAN SPEED CONTROL
SWITCH 3	½ HEAT ON/OFF
SWITCH 4	½ HEAT ON/OFF



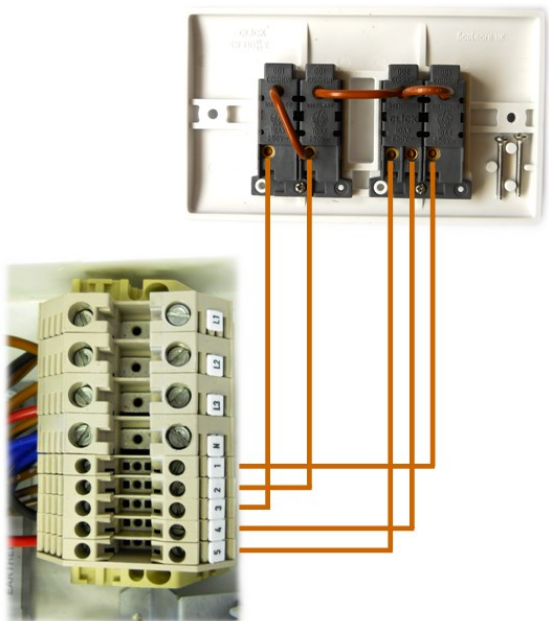
Mounting

When mounted over a standard shop doorway the unit should be fitted as low as possible and not more than 2.3 meters from ground level. A single unit will provide reasonable coverage for a one metre doorway, and for wider doorways units can be mounted end to end.

The unit should be positioned so that the airflow is not obstructed by any part of the doorframe. When installed the top of the heater case should be a minimum of 200mm from the ceiling.



Remote control box switch connections

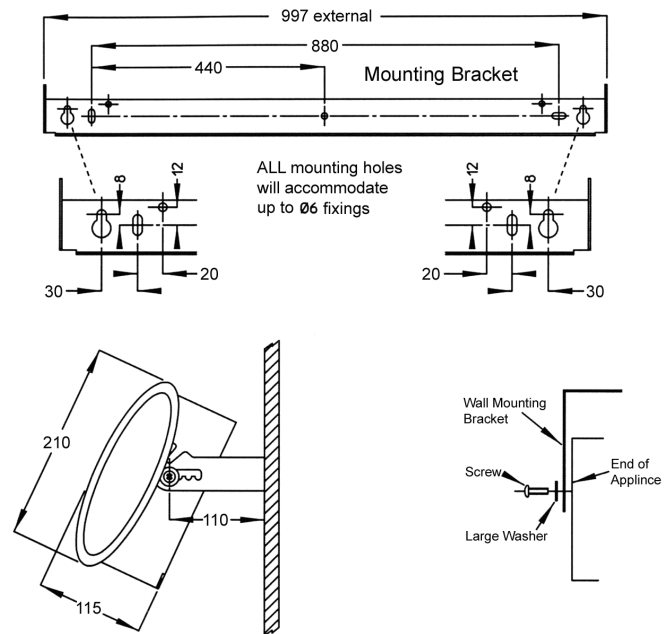


Installation

Carefully unpack the unit and remove the top cover fixing screws. The heater may be mounted using the mounting bracket provided.

Loosen mounting screws, allowing the mounting bracket to be removed from the unit. Making sure that the mounting bracket is horizontal, fix the bracket to the wall using 4 x No 8 wood screws. Place the unit on the mounting bracket ensuring the washers are spaced as shown on Fig 2 (a plain washer either side of the mounting bracket).

Tighten screws to hold the unit at the required angle.



To replace a switch in the control box

1. Switch off the mains supply
2. Remove the switch box cover.
3. Disconnect the wiring to the switch.
4. Release the spring clips and push out the switch.
5. Fit the replacement switch, reconnect the wiring and replace the cover.

Spares

It is essential when ordering spares or replacement parts to state the model number HE7433 and the serial number on the rating plate fixed to the top of the unit.

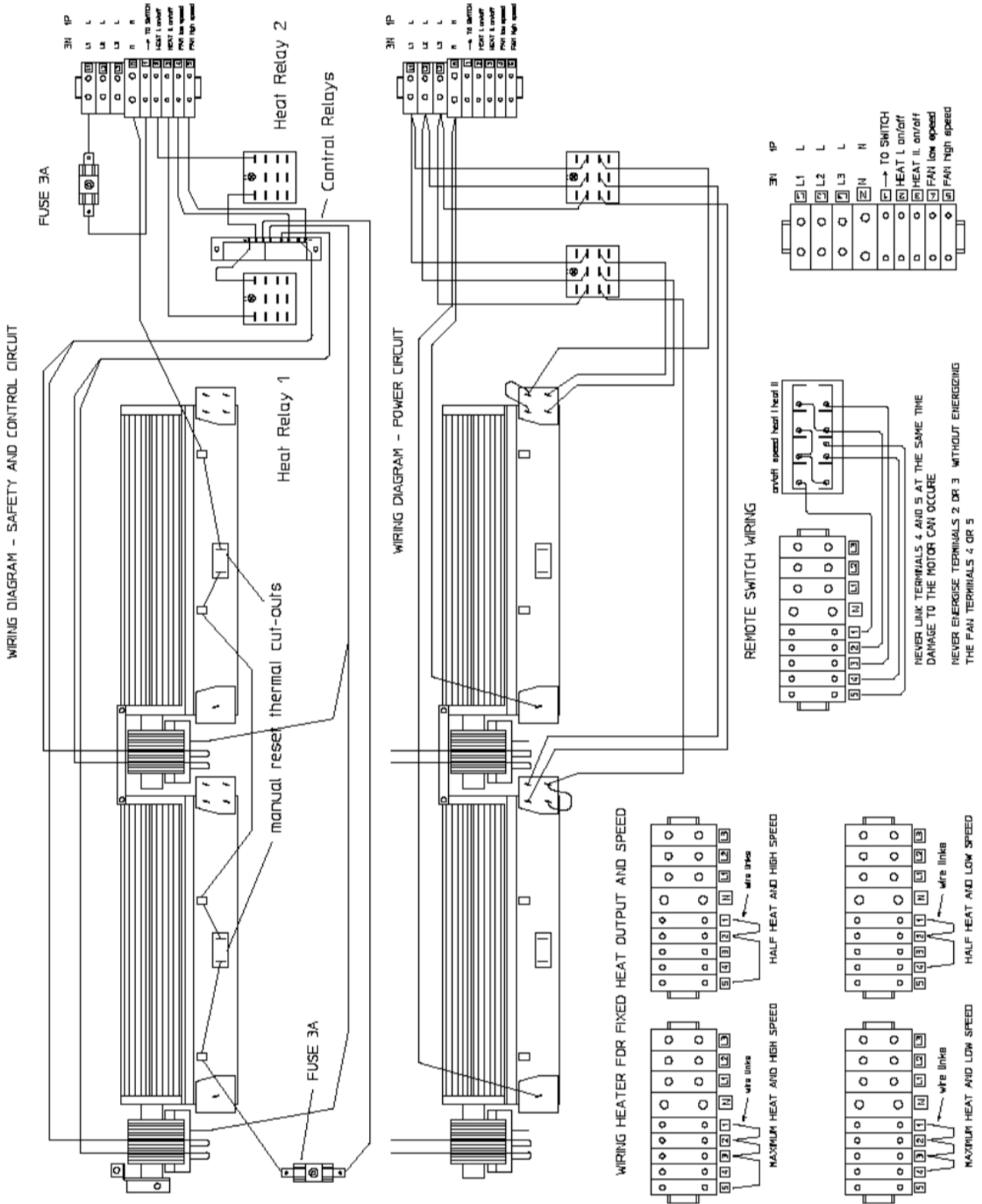
NB: DO NOT COVER ANY OF THE AIR INLET OR OUTLET GRILLES AT ANY TIME.

In the interest of progress the Company reserves the right to vary specifications from time to time without notice. The material listed is offered subject to the Company's General Conditions of Sale, a copy of which can be ob-

Wall bracket assembly

The heater may also be mounted directly onto a suitable wall or bearer by four No. 8 wood screws through the holes provided in the back of the unit casing. Keyhole slots are provided for the top two fixings (fig 1).

Wiring diagram



CUSTOMER HELPLINE

Should you need any advice on the use of your new Consort product please contact our Helpline:

Consort Equipment Products Limited

Thornton Industrial Estate, Milford Haven, Pembrokeshire, SA73 2RT

Tel: 01646 692172 Fax: 01646 695195 Email: technical@consortepl.com Web: www.consortepl.com

Operation hours: Mon to Thu 8.30am to 4.30pm | Fri 8.30am to 3.30pm