

QSC3

Softstart Receiver Unit for SL Wireless Controls Installation and User Guide

1. Getting to know QSC3

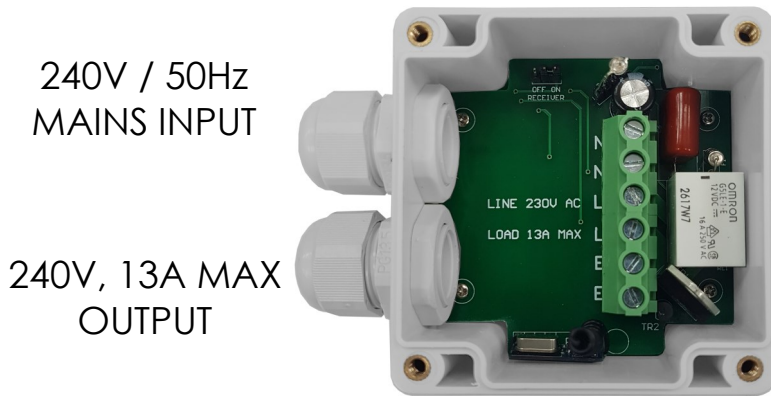


Fig.1

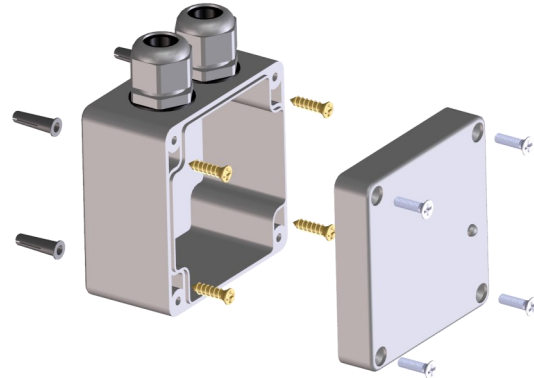


Fig.2

1. Introduction

The QSC3 was designed to control quartz heaters, however it is capable of controlling any heaters up to a maximum load of 13A/3000W. The microcontroller-based unit incorporates zero-crossing switching and a soft-start function to eliminate the quartz heaters initial high inrush current – potentially increasing lamp life by as much as 30% and reducing the stress on the mains supply.

2. Installation

Care should be taken when installing the QSC3. The maximum cable the QSC3 can accept is 2.5mm². When refitting the lid ensure to align the light pipe on the lid with the indicator light.

The QSC3 should be wired to a 13A fuse and must not be covered to avoid overheating. The controlled load should be connected to the Load connection. If being used to control heating it should not be mounted directly above or behind the heater, ideally it should be mounted at the side of and 250mm from the heater.

See Fig.2 for mounting instructions.

3. Operation

The unit can be used as a wireless receiver, or solely as a soft start. This needs to be selected using the small jumper switch located by the LED. It will arrive factory set in the "Receiver-ON" position as show in the picture. In this mode the LED indicator light will light up green showing power is available to the unit. When the output has been enabled by a wireless controller, the LED indicator light will turn red.



To disable the wireless receiver and use solely as a soft start, remove the jumper link and place it on the "Receiver-OFF" and middle pin. In this mode the light will go green momentarily then go to red enabling the output.

3. Operation

QSC3 can be controlled by any of the Consort wireless controllers. For Information on pairing the controller to the QSC3, please refer to the controllers user instructions. The information can be found under the "Pairing" Section.

Customer Helpline

Should you need any advice on the use of you new Consort product please contact our Helpline:

Tel: 01646 692172 Fax: 01646 695195

Email: technical@consortep.com

The QSC3 is guaranteed for one year against faulty material or workmanship. This applies only if the appliance has been used for purposes in accordance with the instructions provided and has not been misused, neglected, damaged, modified or repaired by any person not authorised by us. This guarantee is offered to you as an extra benefit and does not affect your legal rights.

Consort Equipment Products Ltd.

Registered Office: Thornton Industrial Estate, Milford Haven, Pembrokeshire, SA73 2RT

Tel: 01646 692172 | Fax: 01646 695195

sales@consortep.com | technical@consortep.com

BS EN ISO 9001 Registered Company No FM12671

Reasonable care has been taken to ensure that this guide is accurate at the time of printing. In the interest of progress, the Company reserve the right to vary specifications from time to time without notice.