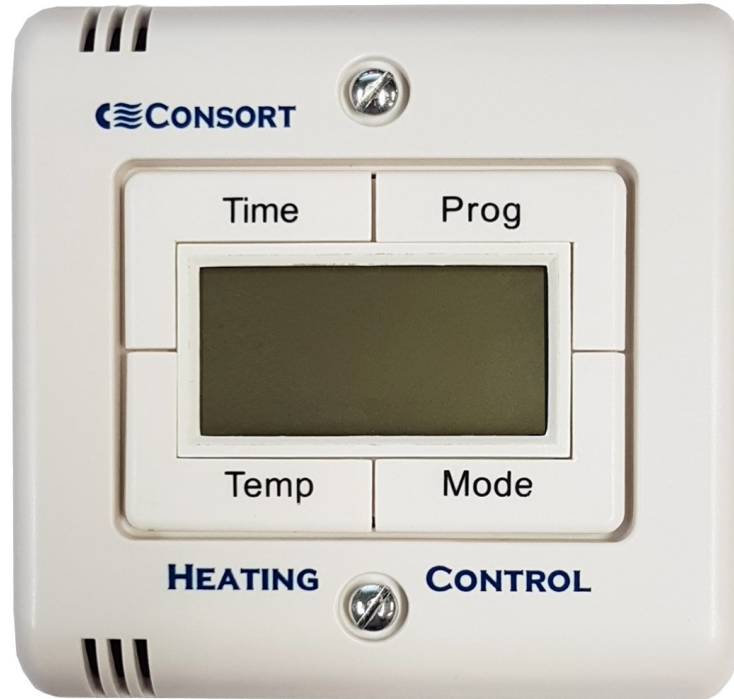


## SLTI CONTROLLER



## Installation & Control Guide for SLTI Wireless Controller

All electrical appliances produced by the Company are guaranteed for one year against faulty materials or workmanship. This applies only if the appliance has been used for purposes in accordance with the instructions provided and has not been connected to an unsuitable electricity supply, or subject to misuse, neglect, damage or modified or repaired by any person not authorised by us. This guarantee is offered to you as an extra benefit and does not affect your legal rights.

The correct electricity supply voltage is shown on the rating label attached to the appliance.

Reasonable care has been taken to ensure that this guide is accurate at the time of printing. In the interests of progress the Company reserve the right to vary specifications from time to time without notice.

### **CUSTOMER HELPLINE**

Should you need any advice on the use of your new Consort product please contact our Helpline:

#### **Consort Equipment Products Limited**

Thornton Industrial Estate, Milford Haven, Pembrokeshire, SA73 2RT

Tel: 01646 692172 Fax: 01646 695195 Email: [technical@consortepl.com](mailto:technical@consortepl.com) Web: [www.consortepl.com](http://www.consortepl.com)

Operation hours: Mon to Thu 8.30am to 4.30pm | Fri 8.30am to 3.30pm

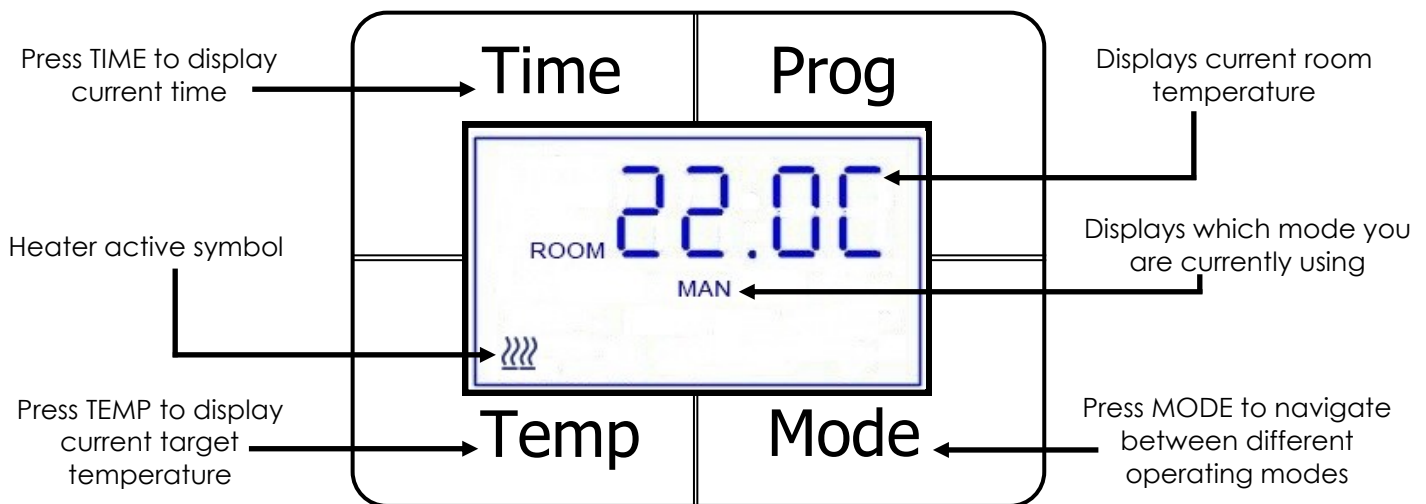
BS EN ISO 9001 Registered Company No FM12671

# SLTI Wireless Controller

## Installation and User Guide

### WARNINGS

- Do NOT handle the controller with wet hands.
- Do NOT use the controller in workshops or rooms with high dust exposure.
- Do NOT use the appliance if damaged.
- Do NOT leave the appliance unattended where young children are present.
- Ensure that nothing is pushed into any aperture of this controller.
- Operating temperature range -10 to +40°C.



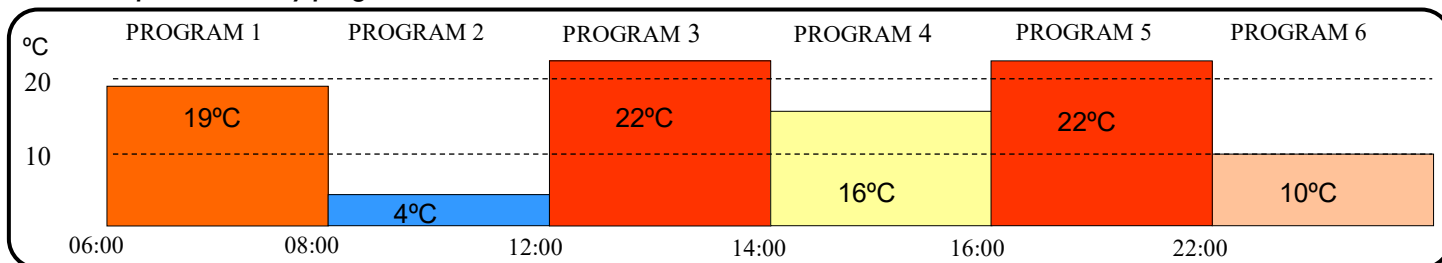
## Overview

The SLTI controller can control an unlimited number of SL and RX heaters. The controller has 4 operating modes. To activate the controller, press any button. The LCD screen will light up and the controller is ready to be used.

## Operating Modes

- **BOOST mode (BOOST)**  
Heating aims for chosen target temperature between 20°C - 35°C for 15 minutes before turning off. Once this time has been reached, the controller will return to its previous operating mode.
- **Manual mode (MAN)**  
Heater maintains a chosen comfort temperature.  
Temperature range 15°C - 35°C.
- **Setback mode (SETB)**  
Heater can be set to standby, frost protection or to maintain a setback temperature.  
Temperature range 4°C - 15°C, 4°C is frost protection and symbol '- - -' is for stand by mode.
- **7 Day program (PROG)**  
7 day automatic timer mode  
Heater is operating on the preset Comfort and Setback periods.  
Up to 6 programmes per day. You can override preset programs to suit your requirements.  
The steps for doing this are explained on the next page.

### An example of one day program on SLTI



## Setting the Time and Day

- **Press and hold the TIME button for 5 seconds.**  
The minutes will be flashing - use TEMP and MODE buttons to set minutes.
- **Press TIME button**  
The hours will be flashing - use TEMP and MODE buttons to set hours.
- **Press TIME button**  
The day will be flashing - use TEMP and MODE buttons to set Day.  
Once you are happy with the settings, press TIME to return to main screen.

## Setting Temperature for Comfort, Setback and Boost modes

When you are in the required mode, simply activate the display by pressing any of the buttons, then press the TEMP button. You will now see the set target temperature, and can adjust it using the TEMP and MODE buttons. Once finished, let the screen time out and the settings will be saved.

## Setting up a programmed Time schedule

1. Press and hold PROG for 5 seconds to enter the time setting.
2. The day will be flashing.
3. Use TEMP and MODE to navigate day, press PROG to select day.
4. PROG 1 will be flashing. Use TEMP and MODE to navigate programme, use PROG to select programme.
5. The minutes will be flashing.
6. To set minutes, use TEMP and MODE change minutes, and then press PROG to confirm the minutes.
7. The hour will now be flashing
8. To set the hour, use TEMP and MODE to change hour, press PROG to confirm the hour.
9. The temperature will now be flashing.
10. To set temperature, use TEMP and MODE to change temperature, press PROG to confirm the temperature.

## Set program inactive

If you do not require the use of all 6 programmes they can be set as inactive. When in programming mode select the programme you want to make inactive and press the TIME button. If the programme is inactive the display will show "- :- -". To activate the programme again press the TIME button.

## Copy day function

If you require the same set of programmes throughout the week it is possible to copy all the programmes from one day to another.

To do this, when in programming mode press and hold the TIME button and this will bring you to the copy day mode. To select which day you wish to copy press the PROG button and this will cycle through numbers 1-7 on the screen, this relates to which day you would like to copy. 1=MON, 2=TUE, 3=WED etc.

To select which day you would like to copy the programmes to, use the TEMP & MODE to navigate to the day. Once both are selected, press the time button to copy the day. The 'to' should blink.

## Temporarily override temperature in PROG mode

You can temporarily override the temperature in PROG mode by pressing TEMP and then using the TEMP and MODE buttons to set the new temperature. Leave the display to time out, and the new set temperature will be maintained until the next program step.

## Locking / Unlocking the buttons

Press and hold the TIME & TEMP buttons for 5 seconds or until you hear a noise.

**To add another programme repeat steps 2-10.**

## Choosing a position in a room

The SLTI controller should be fixed to the wall. Avoid areas with a draught or direct sun. Do not position the controller above or close to the heaters or other heat sources. Damp areas or areas where the SLTI can be mechanically damaged should also be avoided. Avoid installing the controller in areas where there are metal objects between the heater and the controller. This will reduce the RF range. The RF range in ideal conditions can be up to 20m, however this can be reduced when the signal passes through the walls or other objects. The range can be also affected where the controller is mounted close to power cables, motors or equipment producing strong electromagnetic field. If the temperature control feature is used it is necessary to use one controller for each room or zone.

## Installation

The controller is designed to fit onto most single gang back boxes. **Please note the patress screws must be oriented vertically.** When a metal box is used this must be earthed. The controller can be powered by either mains 240VAC 50Hz or 12VDC. The power consumption is less than 1W. Do not connect mains voltage to 12V terminals, this will damage the controller. The maximum size wire that can be used is 1mm<sup>2</sup>, this can be twin and earth or standard flex. Do not over-tighten the connector screws. Take care not to damage the components when connecting the cables.

**WARNING, this controller is not compatible with single gang metal back box with 4 fixing lugs.**

## Connection to the Mains supply

For the mains power, connect L and N wires to the connectors marked as L and N.

Electrical installation should be carried out by a competent installer, preferably registered with NICEIC (National Inspection Council for Electrical Installation Contracting) in accordance with the 17th edition of the IEE Wiring Regulations, (BS.7671), and any relevant Local Authority Bye-Laws.

## Connection to 12V

Powering the controller with 12Vdc allows the controller to be installed in a zone 2 area, however, the installation must comply with the Separated Extra Low Voltage (SELV) requirements. When powered by 12VDC, please ensure that the power supply is suitable for 12V 0.1A. For 12VDC power connect positive wire to terminal marked +12V and negative to terminal marked -12V.

*Please note: A 12Vdc power supply does not come with this controller, however, a standard 12Vdc constant voltage LED driver could be used.*

Mains Connection  
230/240V AC 50Hz

N  
L

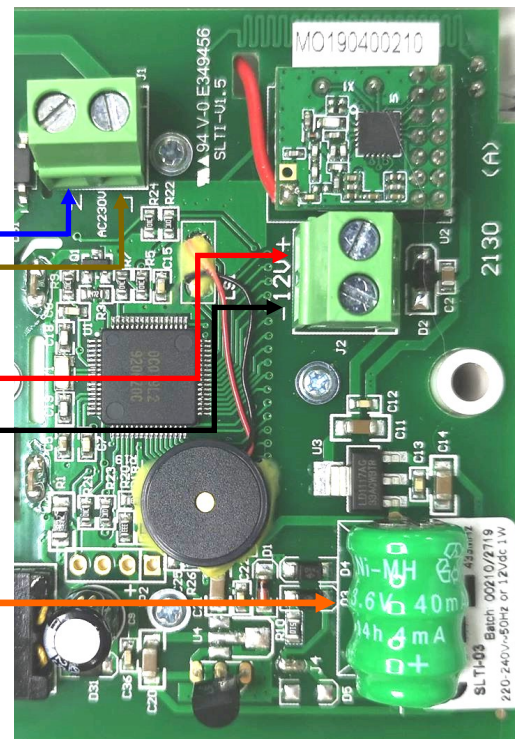
12V DC

+

-

Memory backup battery

(the controller will remember all settings including time for 1 year after being disconnected from power)



## Pairing with heaters

In order to pair your appliance with the controller you must:

- Turn power to the appliance ON.
- Within 20 seconds, press and hold the TIME and MODE buttons on the controller for 2 seconds. An identification code should appear on the screen
- Press TIME. The controller will beep 3 times and the heating will come on.
- If the heating is set to off, then after 4 seconds the heating will turn off.
- The appliance is now ready to be used.