



# Portable Air-Conditioning User's Manual

For Models:

**KYR-25CO/AG**

**KYR-35GW/AG**

**KYR-45GW/AG**

**KYR-55GW/AG**

Please read this user manual carefully to ensure proper use, maintenance and installation.



## Contents

1. Safety Awareness .....	4
2. Name of Parts .....	5
3. Accessories .....	6
4. Appearance and Function of Control Panel.....	7
5. Appearance and Function of Remote Control .....	11
6. Operation Introduction.....	9
7. Installation Explanations .....	12
8. Maintenance Explanations .....	17
9. Troubleshooting.....	18

## 1. Safety Awareness

### VERY IMPORTANT!

Please do not install or use your portable air conditioner before you have carefully read this manual. Please keep this instruction manual for an eventual product warranty and for future reference.

#### Warning

Do not use means to accelerate the defrosting process or to clean, other than those recommended by the manufacturer.

The appliance shall be stored in a room without continuously operating ignition sources (for example: open flames, an operating gas appliance or an operating electric heater.

Do not pierce or burn.

Be aware the refrigerants may not contain an odour.

Appliance shall be installed, operated and stored in a room with a floor area larger than  $X\text{m}^2$ .

MODEL	X (m <sup>2</sup> )
9000Btu/h	8
12500Btu/h	10
14000Btu/h	12
18000Btu/h	15

### Warning (for R290)

Specific information regarding appliances with R290 refrigerant gas.

- Thoroughly read all of the warnings.
- When defrosting and cleaning the appliance, do not use any tools other than those recommended by the manufacturing company.

- The appliance must be placed in an area without any continuously sources of ignition (for example: open flames, gas or electrical appliances in operation).
- Do not puncture and do not burn.
- This appliance contains Y g (see rating label back of unit) of R290 refrigerant gas.
- R290 is a refrigerant gas that complies with the European directives on the environment. Do not puncture any part of the refrigerant circuit.
- If the appliance is installed, operated or stored in an unventilated area, the room must be designed to prevent the accumulation of refrigerant if leaks occur ,resulting in a risk of fire or explosion due to ignition of the refrigerant caused by electric heaters, stoves, or other sources of ignition.
- The appliance must be stored in such a way as to prevent mechanical failure.
- Individuals who operate or work on the refrigerant circuit must have the appropriate certification issued by an accredited organization that ensures competence in handling refrigerants according to a specific evaluation recognized by associations in the industry.
- Repairs must be performed based on the recommendation from the manufacturing company. Maintenance and repairs that require the assistance of other qualified personnel must be performed under the supervision of an individual specified in the use of flammable refrigerants.

## General Safety Instruction

1. The appliance is for indoor use only.
2. Do not use the unit on a socket that is not safe, requiring repairs or not installed properly
3. Do not use the unit, follow these precautions:
  - A: Near to source of fire.
  - B: An area where oil is likely to splash.
  - C: An area exposed to direct sunlight.
  - D: An area where water is likely to splash.
  - E: Near a bath, a laundry, a shower or a swimming pool.
4. Never insert your fingers, rods into the air outlet. Take special care to warn children of these dangers.
5. Keep the unit upward while transporting and in storage. Stand upright for 24 hours before use.

6. Before cleaning the air-conditioner, always turn off or disconnect the power supply.
7. When moving the air-conditioner, always turn off and disconnect the power supply, and move it slowly.
8. To avoid the possibility of fire disaster, the air-conditioner shall not be covered.
9. All the air-conditioner sockets must comply with the local electric safety requirements. If necessary, please check it for the requirements.
10. Children should be supervised to ensure that they do not play with the appliance.
11. If the supply cord is damaged, it must be replaced by the manufacturer, its service agent or similarly qualified persons in order to avoid a hazard.
12. This appliance can be used by children aged from 8 years and above and persons with reduced physical, sensory or mental capabilities or lack of experience and knowledge if they have been given supervision or instruction concerning use of the appliance in a safe way and understand the hazards involved. Children shall not play with the appliance. Cleaning and user maintenance shall not be made by children without supervision.
13. The appliance shall be installed in accordance with national wiring regulations.
14. Details of type and rating of fuses: **T, 250V AC, 3.15A or higher.**
15. Recycling



This marking indicates that this product should not be disposed with other household wastes throughout the EU. To prevent possible harm to the environment or human health from uncontrolled waste disposal, recycle it responsibly to promote the sustainable reuse of material resources. To return your used device, please use the return and collection systems or contact the retailer where the product was purchased. They can take this product for environmentally safe recycling.

16. Contact authorized service technician for repair or maintenance of this unit.
17. Do not pull, deform, or modify the power supply cord, or immerse it in water. Pulling or misuse of

the power supply cord can result in damage to the unit and cause electrical shock.

18. Compliance with national gas regulations shall be observed.

19. Keep ventilation openings clear of obstruction.

20. Any person who is involved with working on or breaking into a refrigerant circuit should hold a current valid certificate from an industry-accredited assessment authority, which authorizes their competence to handle refrigerants safely in accordance with an industry recognized assessment specification.

21. Servicing shall only be performed as recommended by the equipment manufacturer.

Maintenance and repair requiring the assistance of other skilled personnel shall be carried out under the supervision of the person competent in the use of flammable refrigerants.

22. Do not operate or stop the unit by inserting or pulling out the power plug, it may cause electric shock or fire due to heat generation.

23. Unplug the unit if strange sounds, smell, or smoke comes from it.

24. If the unit has been delivered or laid on its side. Leave upright for 24 hours before turning on and using the air conditioner.



#### Notes:

- If any parts are damaged, please contact the dealer or a designated repair shop;
- In case of any damage, please turn off the power switch, disconnect the power supply, and contact the dealer or a designated repair shop;
- In any case, the power cord shall be correctly earthed.

- To avoid the possibility of danger, if power cord is damaged, please turn off the power switch and disconnect the power supply. It must be replaced by
- the dealer or a designated repair shop.

## 2. Name of Parts

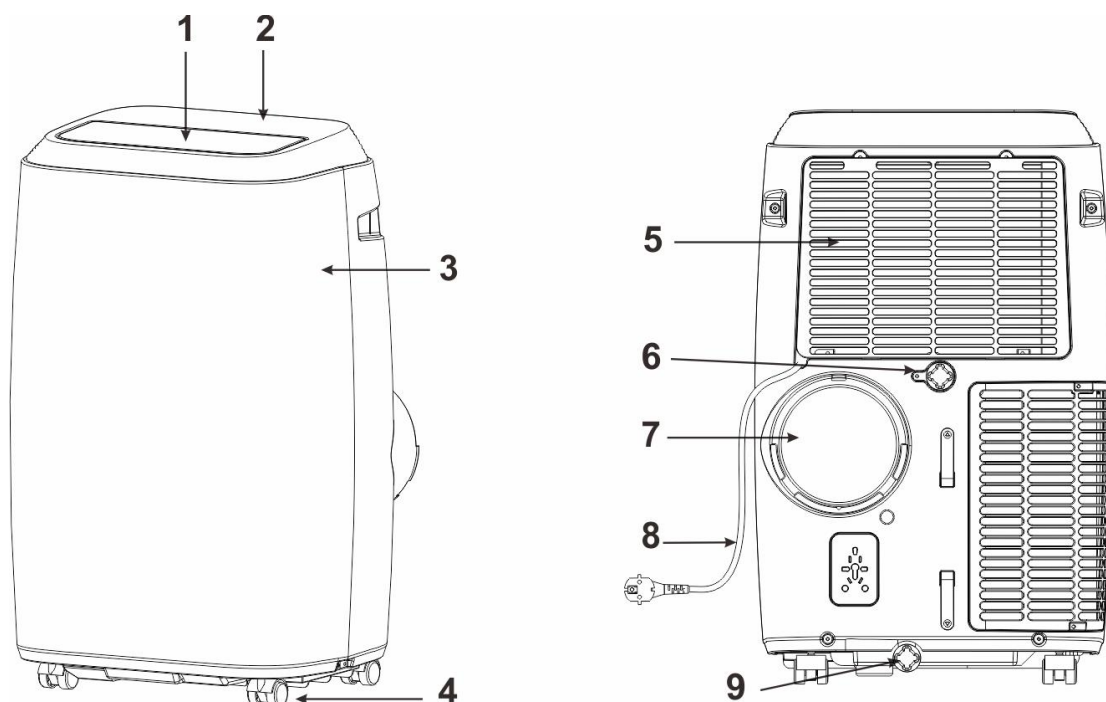
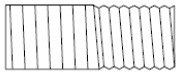




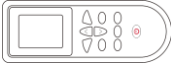








Fig.1

1	Louver	6	Drainage outlet
2	Control panel	7	Air outlet
3	Front panel	8	Power cord
4	Castor	9	Drainage outlet
5	Air inlet		



### 3. Accessories

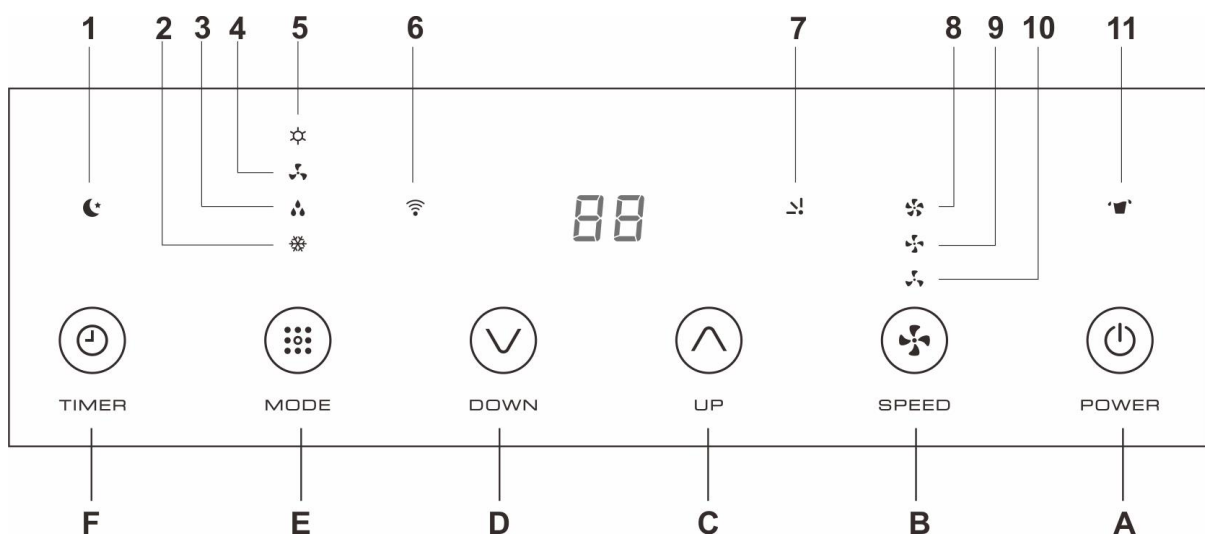
Part	Description	Quantity
	Exhaust hose	1
	Window Connector	1
	Housing adaptor	1
	Remote Controller	1
	Window Kit	1
	Remote Controller	1 (optional)
	Window Connector	1 (optional)
	Window Kit	1 (optional)
	Air outlet	1 (optional)
	Dowel	2 (optional)
	Universal Window kit	1 (optional)
	Water pipe	1 (optional)

	Batteries	2 (optional)
---	-----------	--------------

After unpacking, please check whether the above-mentioned accessories are included, and check their purposes in the installation introduction in this manual.

## 4. Appearance and Function of Control Panel

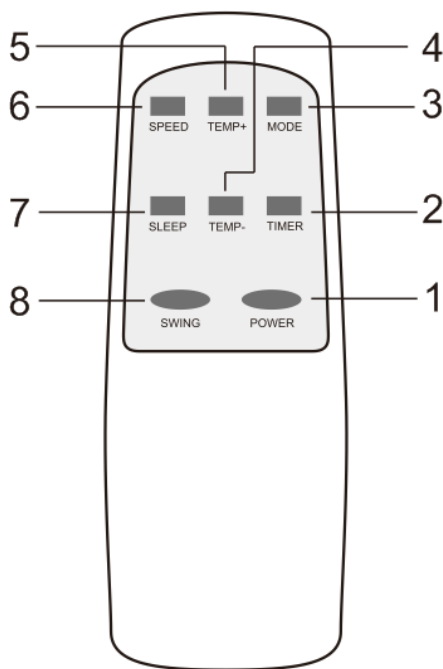
### Cooling & Heat pump model + WIFI



A	Power on/off	3	Dehumidifying
B	Fan speed	4	Fan
C	Temperature up	5	Heating
D	Temperature down	6	WIFI function
E	Operation mode	7	Auto swing
F	Timer on/off	8	Low fan speed
		9	Medium fan speed
1	Sleep mode	10	High fan speed
2	Cooling	11	Water full

## 5. Appearance and Function of Remote Control

Remote Control



1	<b>POWER</b>	Power on/off
2	<b>TIMER</b>	Timer on/off
3	<b>MODE</b>	Operation MODE
4	<b>TEMP-</b>	Temperature down
5	<b>TEMP+</b>	Temperature up
6	<b>SPEED</b>	Fan speed
7	<b>SLEEP</b>	Sleep mode
8	<b>SWING</b>	Auto swing

### Notes:

- Do not drop the remote controller.
- Do not place the remote controller in a location exposed to direct sunlight.
- Do not submerge the remote control in any liquids.

## 6. Operation Introduction

Before starting operations in this section:

- 1) Find a place where there is a suitable power supply nearby.
- 2) As shown in Fig.5 and Fig.5a, install the exhaust hose, and adjust the window position well.

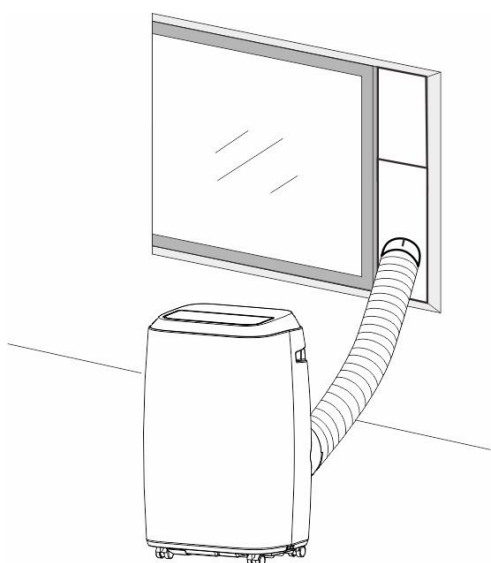


Fig.5

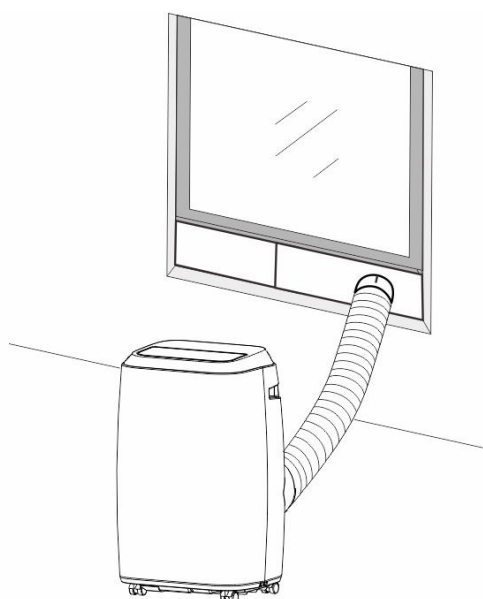


Fig.5a

- 3) Connect drain hose well (only for use during heating mode, not KYR25CO);
- 4) Insert the power cord into a grounded **AC220~240V/50Hz** socket;
- 5) Press the POWER button to turn on the air-conditioner.

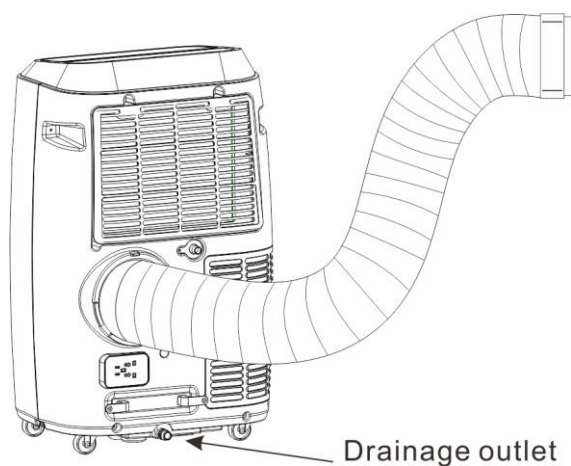


Fig.6

## 6.1. Before using

### Notice:

- Ambient operating temperature range:

	Maximum cooling	Minimum cooling
°C	35	12

	Maximum heating	Minimum heating
°C	27	7

Check whether the exhaust hose has been mounted properly.

Cautions for cooling and dehumidifying operations:

- When using functions on cooling and dehumidifying, keep an interval of at least 3 minutes between each ON/OFF.
- Power supply must meet the requirements.
- The socket is for AC use.
- Do not share one socket with other appliances.
- Power supply is AC220V--240V, 50Hz

## 6.2 Cooling operation

- Press the “MODE” button until the “Cool” icon appears.
- Press the “DOWN” or “UP” button to select a desired room temperature. (16°C-31°C)

- Press the "WIND" button to select wind speed.

### 6.3 Dehumidifying operation

Press the "Mode" button until the "Dehumidify" icon appears.

- Automatically set the selected temperature to current room temperature minus 2°C. (16°C-31°C)
- Automatically set the fan motor to LOW wind speed.

### 6.4 Fan operation

- Press the "Mode" button until the "Fan" icon appears.
- Press the "WIND" button to select wind speed.

### 6.5 Heating operation (this function is not available for the KYR-25CO/AG unit)

- Press the "Mode" button until the "Heat" icon appears.
- Press the "DOWN" or "UP" button to select a desired room temperature. (16°C-31°C)
- Press the "WIND" button to select wind speed.

### 6.6 Timer operation

Timer ON setting:

- When the air-conditioner is OFF, press the "Timer" button and select a desired ON time through the temperature and time setting buttons.
- "Preset ON Time" is displayed on the operation panel.
- ON time can be set to any time from 0-24 hours.

Timer OFF setting

- When the air-conditioner is ON, press "Timer" button and select a desired OFF time through the temperature and time setting buttons.
- "Preset OFF Time" is displayed on the operation panel.
- OFF time can be set to any time from 0-24 hours.

### 6.7 Auto SWING

After machine turns on, press this key, the louver will swing continuously left and right; by pressing this button again the movement will stop and the louver will remain in that position. (Some models).

### 6.8 SLEEP mode

- While in cooling mode, press the SLEEP key to set the temperature. It increases 1°C after an hour and at most increases 2°C after 2 hours.
- While in heating mode, press the SLEEP key to set the temperature. It decreases 1°C after an hour and at most decreases 2°C after 2 hours.
- Press the SLEEP key again to cancel the setting.

### 6.9 Water drainage

Water Full Alarm

The inner water tank in the air-conditioner has one water level safety switch, it controls the water level. When water level reaches an anticipated height, the water full indicator lights up. When the water is full, please remove the bung/stopper from the drainage outlet at the bottom of unit, and drain all water outside.

Continuous Drainage/Storage

- When you plan to leave this unit unused for a long time, please remove the rubber bung/stopper from the drainage hole at the bottom of unit, and drain all water outside.
- You can use the continuous drainage with a drainage hose connected to the bottom drain hole, when the unit is working in HEAT mode.
- The continuous drainage is not required when the unit working at the COOL or DEHUMIDIFY mode. The unit can evaporate the condensate water automatically itself using a water splash

motor. Make sure the drainage holes are sealed well.

- If water splash motor is damaged, continuous drainage can be used. To connect the drain hose to the bottom drainage outlet (Fig.6), the unit will also work well.
- If splash motor is damaged, intermittent drainage can also be used. Under this condition, when the water full indicator lights up, please connect a drain hose to the bottom drainage hole, then all the water in the water tank will be drained outside. The unit can now work well again.

#### 6.10 WIFI function (for some models)

- With the unit plugged in but power off using remote control, press and hold the SPEED button for 5s, this enters the WIFI factory set up mode;
- The unit is connected with WIFI if the WIFI indicator LED is on, otherwise it is not connected. When the WIFI indicator is flashing slowly, the unit is in the WIFI set up mode, if flashing quickly, the unit is connected with WIFI;
- You can operate all the air conditioner functions by the mobile phone APP with the WIFI connected.

## 7. Installation Explanations

### 7.1 Installation Explanations:

- The portable air-conditioner shall be installed on a flat surface with empty space all around. Don't block the air outlet, and the required distance around should be at least 30cm. (See Fig.8)
- Should not be installed in wet location, such as the laundry room, bathroom, shower, pool room etc.
- Socket wiring should be in accordance with the local electric safety requirements.

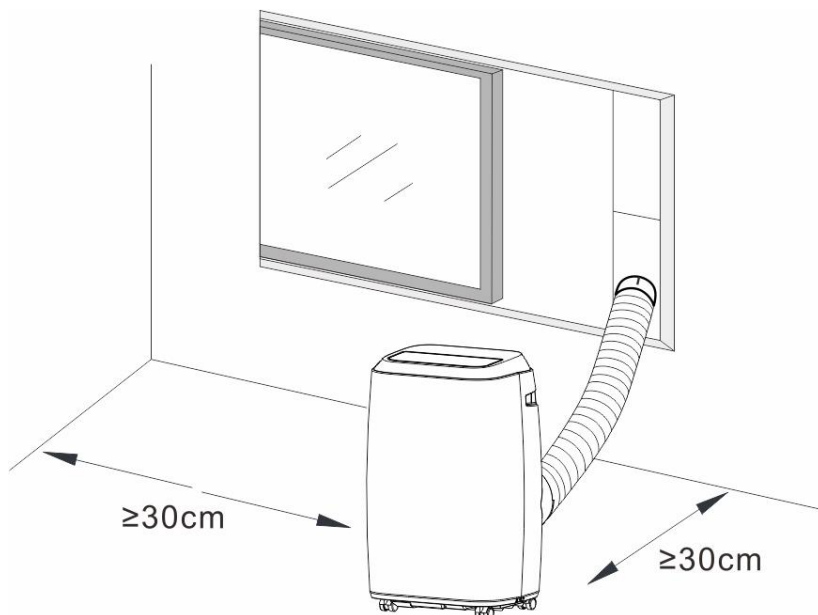


Fig.8

## 7.2 Introduction to Exhaust Hose Installation

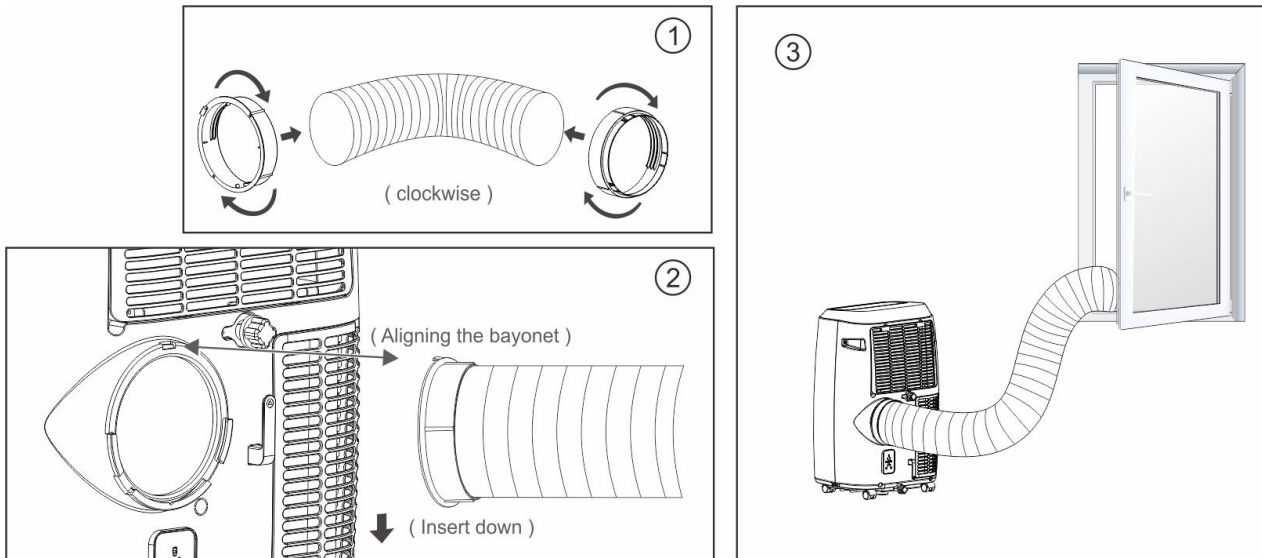


Fig.9

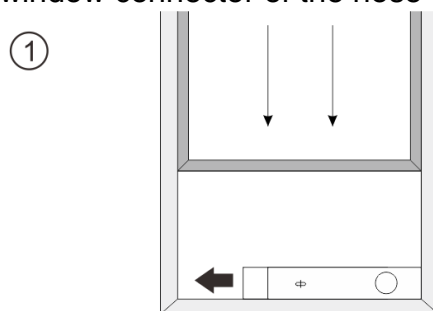
### Temporary installation

1. Twist the housing adaptor and fix the window Connector to the end of the exhaust hose.
2. Insert the fixing clip of the housing adaptor into the openings at back of the air conditioner.
3. Put the other end of the exhaust hose to the nearest window (see Fig.9).

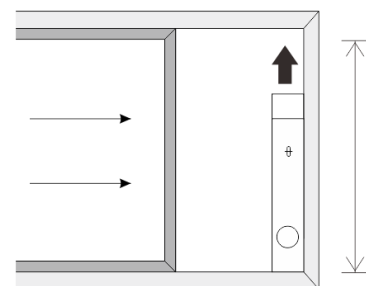
### Window Kit Installation

The installation manner of window slider kit is mostly in “horizontal” or “vertical”. As shown Fig.10 and Fig.10a, check the min. and max. size of the window before the installation.

1. Install the window kit on the window (Fig.10, Fig.10a);
2. Adjust the length of the window slider kit according to the window width or height, and fix it with the dowel;
3. Insert the window connector of the hose to the hole of the window kit (Fig.11).



Window width  
min:67.5cm  
max:123cm



Window height  
min:67.5cm  
max:123cm



Fig.10

Fig.10a

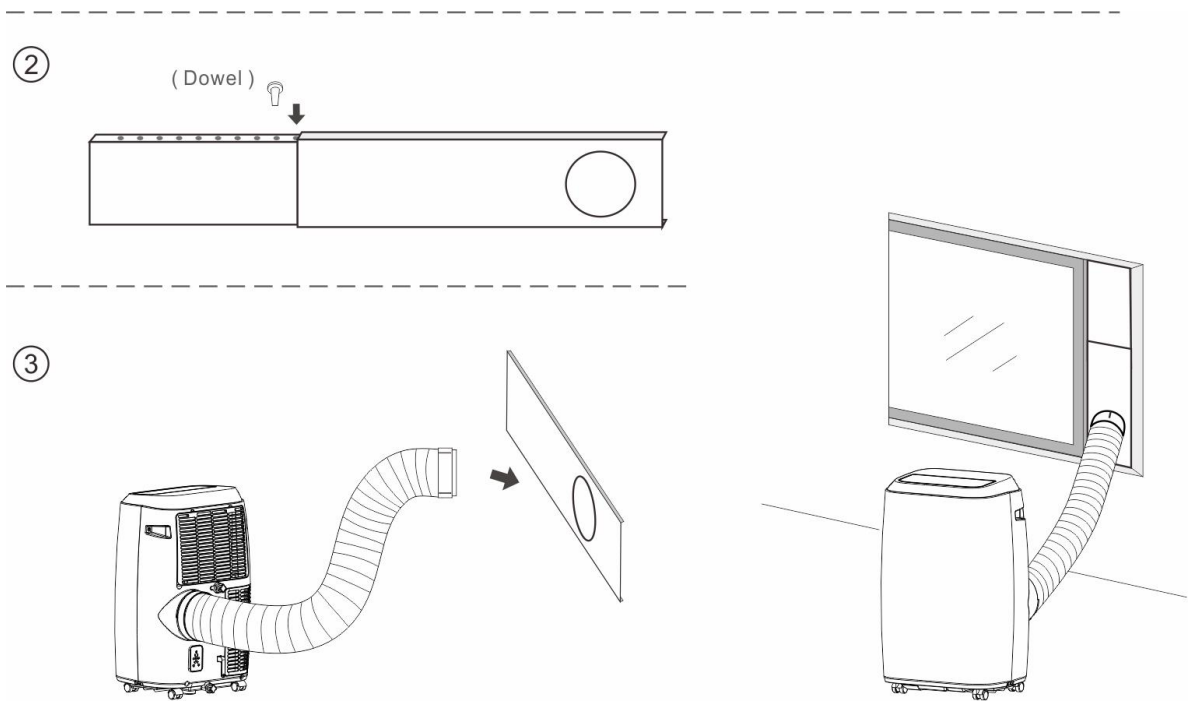
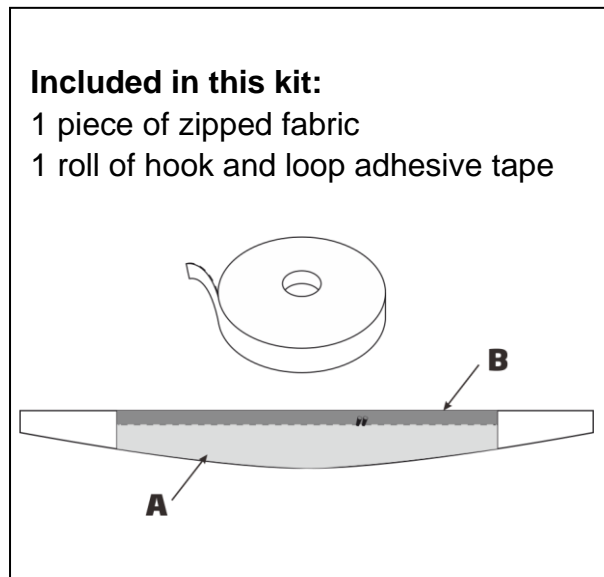
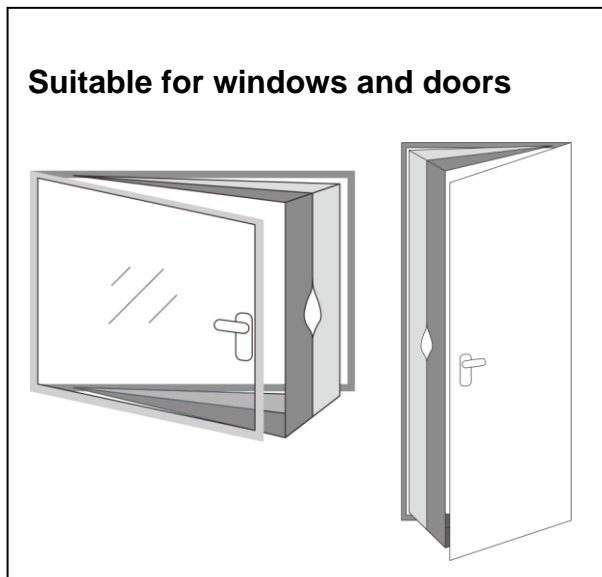
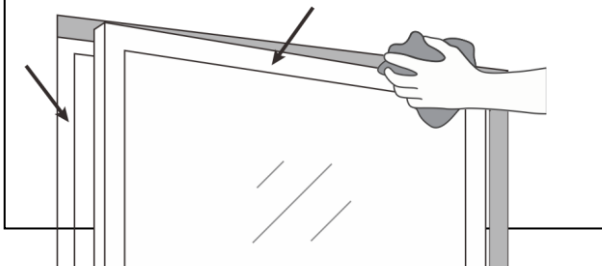


Fig.11

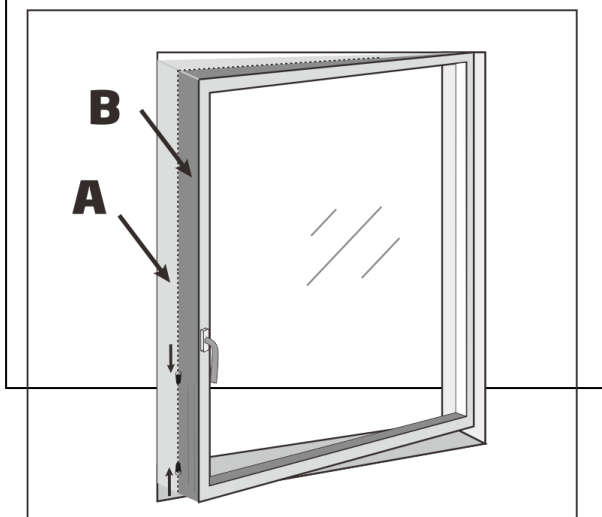
## Universal window kit accessory for mobile air conditioner



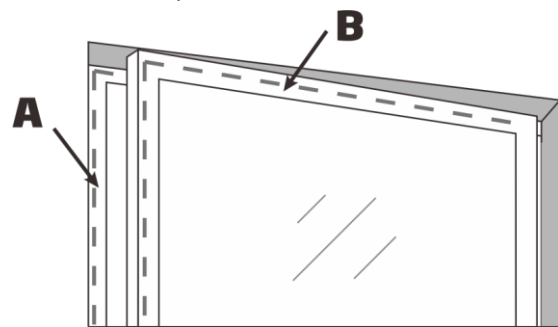
1. Open the window and clean the doors and frame before sticking the adhesive tape.



3. Stick the widest side (A) of the large white fabric piece to the window frame and then stick the narrower side (B) to the window leaf (handle side) from the center, then up and finally down.



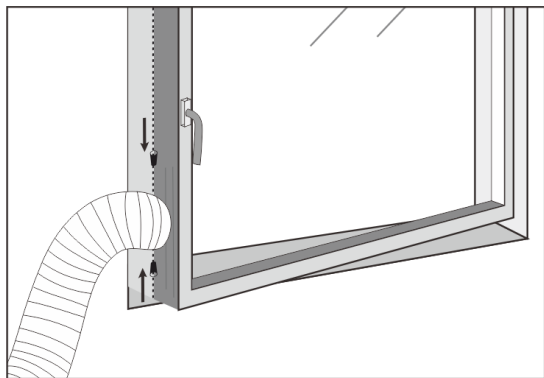
2. Cut large strips of adhesive gripping tape to the dimensions of the window. Fix them to the frame of your window and then do the same on the inner surface of the window flap (on the handle side).



4. Close the window and make sure the large fabric piece is not stuck in the closing seams and the window closes always correctly, even with the sticky adhesive tape. Fold up spare fabric tidily.

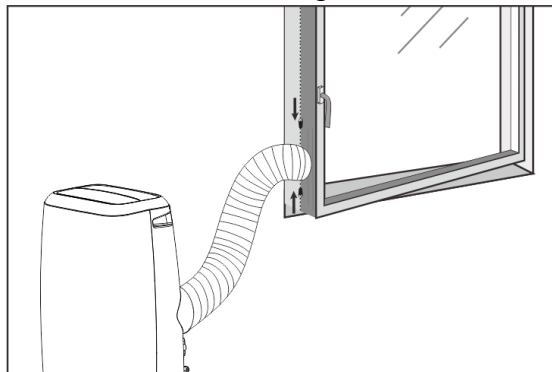
5. Open the window gently and open the zipper of the fabric piece (at level of the bottom or middle of the window) then insert the exhaust duct into the opening.

Readjust the zipper so that the exhaust duct is attached so that there is no air exchange between the inside and the outside.



6. Your sealing kit is now installed, you can now turn on and enjoy the coolness of your mobile air conditioner!

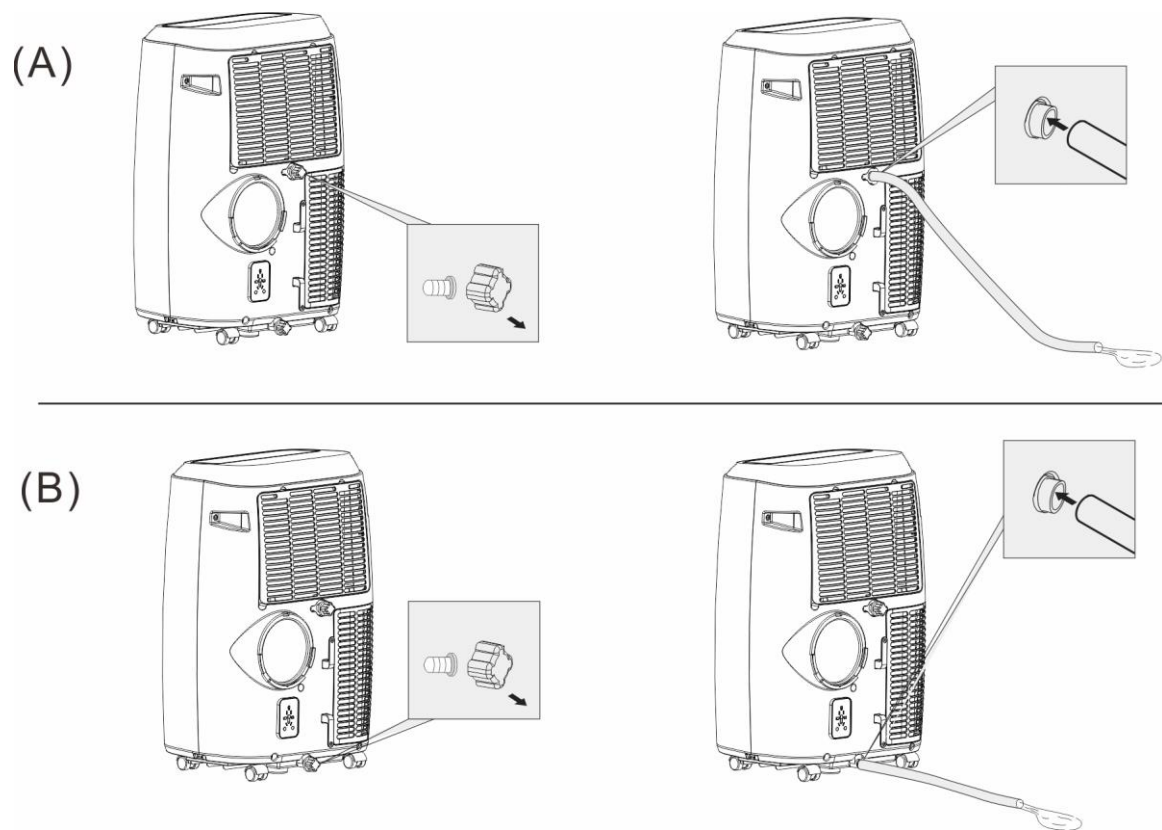
If you no longer want to use your mobile air conditioner and close your window, you can simply remove the pipe from the zipper and close your window, check that the fabric piece is not stuck in the closing seals.



N.B. : If you have a window with French opening and make the installation of the sealing kit on the second leaf (without the handle).  
Before installation, check that the adhesive gripping tape will not damage your window frames.

### 7.3 Water Full alarm

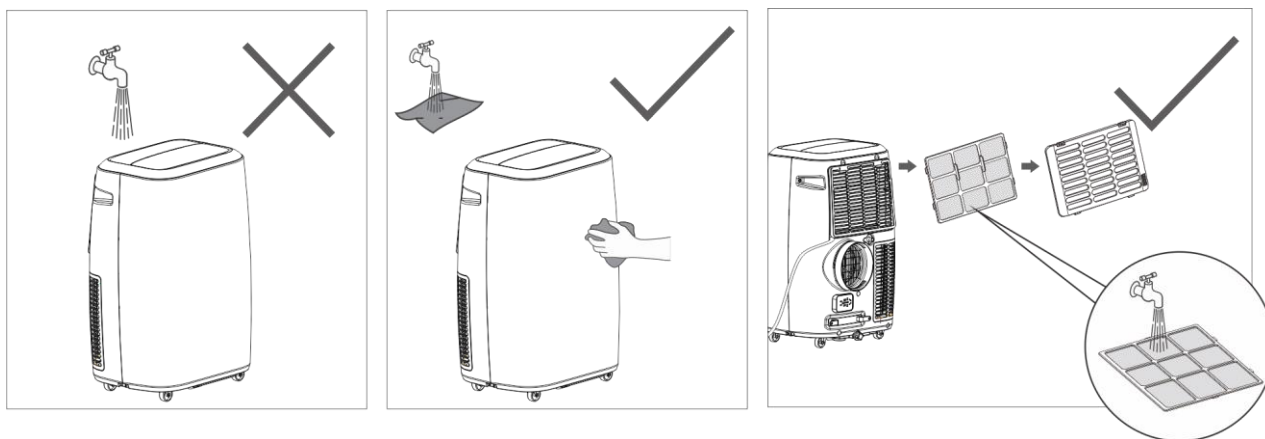
The inner water tray inside the air-conditioner has one water level safety switch, it controls the water level. When the water level reaches an anticipated height, the water full indicator lights up. (If water splash motor is damaged, when the water is full, please remove the rubber bung/stopper at the bottom of unit, and all water will be drained outside.)



## 8. Maintenance Explanations

### Declaration:

- 1) Before cleaning, be sure to disconnect the unit from any electric supply outlet;
- 2) Do not use gasoline or other chemicals to clean the unit;
- 3) Do not wash the unit directly;
- 4) If the conditioner is damaged, please contact the dealer or repair shop.



### 8.1 Air Filter

- If the air filter becomes clogged with dust/dirt, the air filter should be cleaned once every two weeks.
- Dismounting  
Open the air inlet grille and take off air filter.
- Cleaning  
Clean the air filter with neutral detergent in lukewarm (40°C) and dry it in the shade.
- Mounting  
Put the air filter into the inlet grille, replace the components as they were.

### 8.2 Clean the Air-conditioner Surface

First clean the surface with a neutral detergent and wet cloth, and then wipe it with a dry cloth.

## 9. Troubleshooting

Problem	Possible Causes	Suggested Remedies
1. Unit does not start when pressing on/off	- Water full indicator lamp blinks, and water tank is full.	Drain the water out of the water tank.

button	- Room temperature is higher than the set temperature. (Heating mode)	Set a higher temperature
	- Room temperature is lower than the set temperature. (Cooling mode)	Set a lower temperature
2. Not cool enough	- The doors or windows are not closed.	Make sure all the windows and doors are closed.
	- There are heat sources inside the room.	Remove the heat sources if possible
	- Exhaust air hose is not connected or blocked.	Connect or clean the exhaust air hose.
	- Temperature setting is too high	Set a lower temperature
	- Air inlet is blocked	Clean the air inlet
3. Noisy	- The ground is not level or not flat enough	Place the unit on a flat, level surface if possible
	- Sound comes from the flowing of the refrigerant inside the air conditioner	It is normal
4. E0 Code	Room temperature sensor failed	Replace room temperature sensor (the unit can also work without replacement.)
5. E1 Code	Condenser temperature sensor failed	Replace condenser temperature sensor
6. E2 Code	Water tank full when cooling	Remove the bung/stopper and empty the water
6. E3 Code	Evaporator temperature sensor failed	Replace evaporator temperature sensor
7. E4 Code	Water tank full when heating	Please empty the water tank

**Note: Your product may look different to the images used in this instruction guide.**

For Service & Support Contact



Support Portal:

You can register your Warranty

or

Open a Support Ticket

at

[support.airconditioningcentre.com](http://support.airconditioningcentre.com)

Email: [support@airconditioningcentre.com](mailto:support@airconditioningcentre.com)

**Tel: 03703 344 345**

Air Conditioning Centre is a division of Martin Industries Ltd

Rev04.20