

# Clarifire®



Only suitable for well insulated areas and not designed  
to be the primary heat source

## 2.8KW 230V PTC ELECTRIC FAN HEATER MODEL NO: DEVIL 2800PTC

PART NO: 6925600

### OPERATION & MAINTENANCE INSTRUCTIONS



ORIGINAL INSTRUCTIONS

GC0621 rev 1

---

## INTRODUCTION

---

Thank you for purchasing this CLARKE Electric Fan Heater.

Before attempting to use this product, please read this manual thoroughly and follow the instructions carefully. In doing so you will ensure the safety of yourself and that of others around you, and you can look forward to your purchase giving you long and satisfactory service.

---

## GUARANTEE

---

This product is guaranteed against faulty manufacture for a period of 12 months from the date of purchase. Please keep your receipt which will be required as proof of purchase.

This guarantee is invalid if the product is found to have been abused or tampered with in any way, or not used for the purpose for which it was intended.

Faulty goods should be returned to their place of purchase, no product can be returned to us without prior permission.

This guarantee does not effect your statutory rights.

---

## SPECIFICATIONS

---

Operating Voltage and Frequency:	230 V / 50Hz / 1 Phase
Operating Temperature: (Min/Max)	-15 to +25°C
Max Heat Output:	2.8 kW - 9554 BTU/hr.
Air Output:	280m <sup>3</sup> /h
Safety Device:	Thermal cut-out
Duty Cycle Classification:	S1 Continuous duty
Electrical Insulation Class	I
Ingress protection	IP20
Product: Depth x Width x Height	265 x 210 x 290 mm
Product Weight	2.8 kg

## THE FOLLOWING TABLE ADDRESSES THE INFORMATION REQUIREMENTS OF REG.2015/1188

Item	Symbol	Value	Unit
<b>Heat output</b>			
Measured seasonal space heating energy efficiency			36%
Nominal heat output	$P_{nom}$	2.8	kW
Minimum heat output (indicative)	$P_{min}$	1.4	kW
Maximum continuous heat output	$P_{max}$	2.8	kW
<b>Auxiliary electricity consumption</b>			
At nominal heat output	$eI_{max}$	n/a	kW
At minimum heat output	$eI_{min}$	n/a	kW
In standby mode	$eI_{SB}$	n/a	kW
<b>Type of heat input for electric storage local heaters only</b>			
Manual heat charge control with integrated thermostat			No
Manual heat charge control with room and/or outdoor temperature feedback			No
Electronic heat charge control with room and/or outdoor temperature feedback			No
Fan assisted output			No
<b>Type of heat output/room temperature control (select one)</b>			
Single stage heat output, no temperature control			No
Two or more manual stages, no temperature control			No
With mechanical thermostat temp control			Yes
With electronic temperature control			No
Electronic temperature control with day timer			No
Electronic temperature control with week timer			No
<b>Other control options (multiple selections possible)</b>			
Room temperature control with presence detection			No
Room temperature control with open window detection			No
Room temperature control with distance control option			No
Room temperature control with adaptive start control			No
Room temperature control with working time limitation			No
Room temperature control with black bulb sensor			No

## SAFETY ADVICE

Make sure that you read, understand and comply with the following.

The following symbols appear on the unit.

	Hot surface,- do not touch	 <b>DO NOT COVER</b>	Do not cover		Read the manual
---	-------------------------------	--	--------------	---	-----------------

## ELECTRICAL SAFETY

- Regularly inspect the power cable / plugs to be used with this heater and DO NOT use the heater if the power cable is damaged.
- Minimise the risk of electric shock by installing a RCCB (Residual Current Circuit Breaker).
- Make sure that the voltage on the rating plate is the same as the voltage of the power supply. If in doubt, consult a qualified electrician.
- DO NOT abuse any electrical cable used with this heater. NEVER use the cable for pulling or unplugging the heater.
- Keep the cable away from sources of heat, oil, sharp edges or moving parts. Damaged or tangled cables increase the risk of electric shock.

## OPERATION

- The heater must only be used by persons who have read these instructions and have been trained in its use.
- DO NOT obstruct the air inlet and outlet sections of the heater.
- DO NOT cover the heater.
- DO NOT touch the heater casing or grille when first switched off, as these will be very hot and will take time to cool.
- DO NOT get the heater wet or use in areas of high condensation.
- DO NOT allow the power cable to touch hot surfaces.
- DO NOT connect other appliances to the same mains socket as the heater.
- ONLY use the heater on a level surface.
- DO NOT use this heater with a programmable timer used to switch it on automatically.

## POSITIONING

---



**WARNING: DO NOT USE THE HEATER NEAR FLAMMABLE MATERIAL, LIQUIDS, SOLIDS, GASES OR COMPRESSED GAS CYLINDERS ETC.**

---

- This heater is designed for indoor use only.
- DO NOT place the heater close to a bath, wash basin, shower, swimming pool or any other water-filled area or wet surface. DO NOT place the heater up against any surface such as a wall, door or furniture etc.
- DO NOT place the heater immediately below any electrical outlet.
- NEVER place the heater near combustible materials such as curtains, furniture etc. Allow at least 2 metre clearance.
- DO NOT place the heater on a raised surface or anywhere where it could topple over
- ALWAYS ensure that the grille cannot be blocked by curtains or other fabrics.
- DO NOT operate in explosive atmospheres such as in the presence of flammable liquids, gases or dust such as in a paint spray booth or any explosive environment. Electric motors create sparks which may ignite dust or fumes.
- DO NOT LEAVE THE HEATER UN-ATTENDED, FOR EXAMPLE, LEFT ON AT NIGHT.

## COMMON SENSE

- DO NOT operate when you are tired or under the influence of alcohol, drugs or intoxicating medication.
- DO NOT stand on the heater.
- DO NOT use the heater with wet hands or when there is water on the power cable.
- Turn the heater off when not in use and keep it in a safe, dry, childproof location.
- The heater is designed to heat enclosed areas, such as workshops and other industrial areas. DO NOT use the heater for any other function. It is not suitable for drying clothes or laundry.
- Young children must be kept away unless continuously supervised.
- DO NOT touch the heater casing or grille during use.

# ELECTRICAL CONNECTIONS



**WARNING: READ THESE ELECTRICAL SAFETY INSTRUCTIONS THOROUGHLY BEFORE CONNECTING THE HEATER TO THE MAINS SUPPLY.**

Before switching the product on, make sure that the voltage of your electricity supply is the same as that indicated on the rating plate. Connecting it to any other power source may cause damage.

If it is necessary to change the fuse in the plug, the fuse cover must be refitted. If the fuse cover becomes lost or damaged, the plug must not be used until a suitable replacement is obtained.

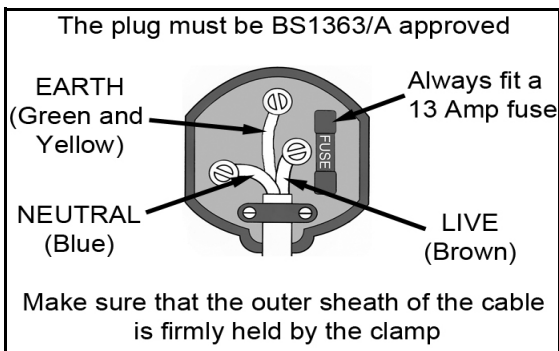
If the plug has to be changed due to damage, a replacement should be fitted, following the wiring instructions shown below. The old plug must be disposed of as insertion into a mains socket could cause an electrical hazard.



**WARNING: THE WIRES IN THE POWER CABLE OF THIS PRODUCT ARE COLOURED IN ACCORDANCE WITH THE FOLLOWING CODE:  
BLUE = NEUTRAL    BROWN = LIVE    YELLOW/GREEN = EARTH**

If the colors of the wires in the power cable of this product do not correspond with the markings on the terminals of your plug, proceed as follows.

- The **Blue** wire must be connected to the terminal which is marked **N** or coloured **Black**.
- The **Brown** wire must be connected to the terminal which is marked **L** or coloured **Red**.
- The **Yellow/Green** wire must be connected to the terminal which is marked **E** or coloured **Green**.



We strongly recommend that this machine is connected to the mains supply via a Residual Current Device (RCD)

If in any doubt, consult a qualified electrician. DO NOT attempt any repairs yourself.

# OPERATION






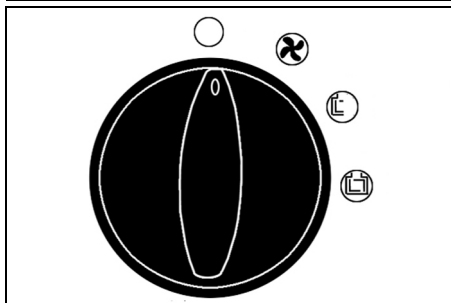
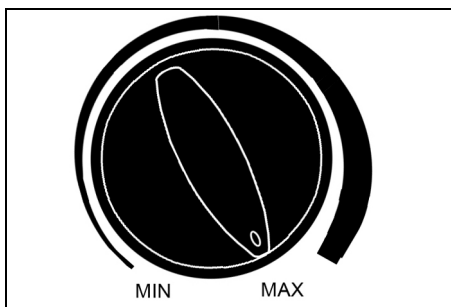
**WARNING: DO NOT USE THIS HEATER IN SMALL ROOMS WHEN THEY ARE OCCUPIED BY PERSONS NOT CAPABLE OF LEAVING THE ROOM ON THEIR OWN, UNLESS CONSTANT SUPERVISION IS PROVIDED.**



**CAUTION: SOME PARTS OF THIS PRODUCT CAN BECOME VERY HOT AND CAN CAUSE BURNS. PARTICULAR ATTENTION HAS TO BE GIVEN WHERE CHILDREN AND VULNERABLE PEOPLE ARE PRESENT.**

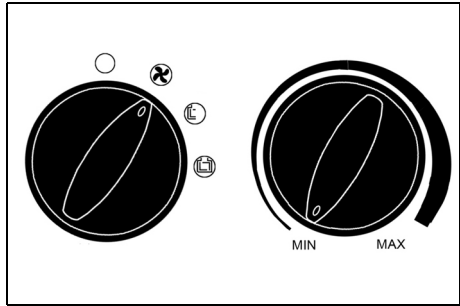
1. Put the heater in a level position on a flat surface and at a safe distance from flammable materials. Keep a minimum of 2m clearance all round.
2. Connect the heater to a suitable power supply.
3. Set the thermostat control to the maximum setting (fully clockwise).
4. Set the mode selector to one of the 3 settings:

0	Off
	Fan Only
	Heat Setting 1
	Heat Setting 2



- The heater will take up to three minutes to reach optimum temperature.
5. Once the room reaches the required temperature, turn the thermostat control slowly counter-clockwise until the thermostat clicks, leave the control in this position.
    - The room temperature will be maintained at this setting. The heater will continue to operate until the power switch is turned to the OFF position.

6. For fan only operation, turn the power switch to the fan only setting and set the thermostat to its minimum setting.



7. Adjust the angle by loosening both adjusting knobs and setting the required angle.

8. Retighten the adjusting knobs.

9. When not in use, disconnect the heater from the mains supply. Store it in a safe, dry, childproof location.



## MAINTENANCE.



**WARNING: SERVICING OR INTERNAL MAINTENANCE MUST ONLY BE CARRIED OUT BY THE CLARKE SERVICE DEPARTMENT.**

**WARNING: ALWAYS DISCONNECT FROM THE POWER SUPPLY AND ALLOW THE HEATER IT TO COOL DOWN BEFORE PERFORMING ANY MAINTENANCE TASKS.**

- Check that the heater is in good working order. Take immediate action to repair or replace damaged parts.
- DO NOT allow the heating elements to become covered with dust which could become a fire hazard. If used in a dusty workplace it should be cleaned after every use with a dust extractor.
- ONLY recommended parts should be used. Unapproved parts may be dangerous and will invalidate the warranty.
- DO NOT attempt to repair a damaged heater, contact the CLARKE service department.
- Clean the heater with a soft damp cloth once cold. DO NOT use solvents or abrasives
- No other maintenance is required, should you discover any problem with the heater, return it to the CLARKE service department for repair.



## SERVICE & REPAIRS

Have your heater repaired by a qualified person using identical replacement parts. This will ensure that the safety of the heater is maintained.

## TROUBLE SHOOTING

Problem	Possible Cause	Remedy
Heater does not operate, although plugged in with the switch and thermostat switched on.	Plug is loose/bad connection.	Pull the plug out & check all connections (cable/plug and socket).
	Fuse blown or circuit breaker trips.	Replace if necessary and investigate cause. If fuse blows repeatedly, consult your CLARKE dealer.
	No power at socket outlet	Insert the plug in a suitable socket.
Heating element glowing hot.	Input voltage too high.	Use a power supply in accordance with the rating on the label.
	Air inlet grille is blocked.	Ensure the heater is kept away from any objects which could cover the air inlet or be drawn into it.
The unit has failed to heat up so only the air fan has operated.	Control switch not set at a "HEATING" level.	Turn switch to a heating level.
	Thermal cut out device is active/ Thermostat has tripped	Turn the thermostat and listen. If there is no CLICK and the thermostat is not damaged, the heater will automatically switch ON when it has cooled down.
Abnormal noise.	Heater is not level.	Stand heater on a level surface.

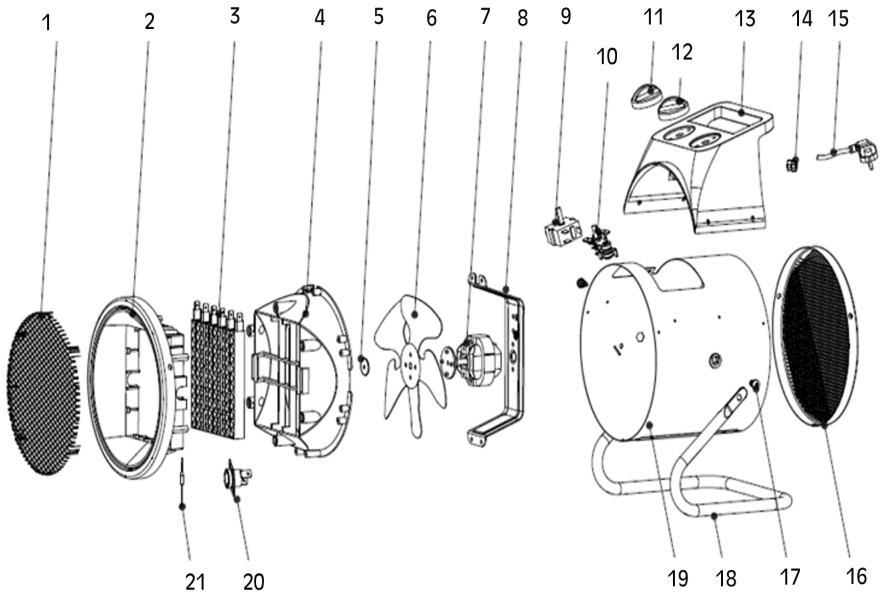
## ENVIRONMENTAL RECYCLING POLICY



Through purchase of this product, the customer is taking on the obligation to deal with the WEEE in accordance with the WEEE regulations in relation to the treatment, recycling & recovery and environmentally sound disposal of the WEEE.

In effect, this means that this product must not be disposed of with general household waste. It must be disposed of according to the laws governing Waste Electrical and Electronic Equipment (WEEE) at a recognised disposal facility.

# COMPONENT PARTS



1	Front Grille
2	Air Outlet Shutter Fixed Ring
3	PTC Heating Element
4	Air Flue
5	Fan Plate
6	Fan
7	Motor
8	Motor Support
9	Rotary Switch
10	Adjustable Thermostat
11	Mode Selector Knob

12	Thermostat Knob
13	Control Box Cover
14	Cable Clamp
15	Power Cable/Plug
16	Back Grille
17	M6 x 16mm Screw
18	Steel Pipe Frame
19	Outer Casing
20	Self-Resetting Thermostat
21	Temperature Probe

# DECLARATIONS OF CONFORMITY



Fitzwilliam Hall, Fitzwilliam Place, Dublin 2

## DECLARATION OF CONFORMITY

This is an important document and should be retained.

We hereby declare that this product(s) complies with the following directive(s):

- 2014/30/EU *Electromagnetic Compatibility Directive*
- 2014/35/EU *Low Voltage Equipment Directive*
- 2011/65/EU *Restriction of Hazardous Substances, (amended by 2015/863)*
- 2009/125/EC *Eco-Design Directive (EU 2015/1181)*

The following standards have been applied to the product(s):

- EN55014-1:2017, EN 55014-2:2015, EN 61000-3-3:2013, EN 61000-3-2:2019, EN 60335-1:2012+A11+A13, EN 60335-2-30:2009+A11, EN 62233:2008.

The technical documentation required to demonstrate that the product(s) meet(s) the requirement(s) of the aforementioned directive(s) has been compiled and is available for inspection by the relevant enforcement authorities.

The CE mark was first applied in: 2020

**Product Description:** 2.8 kW PTC Ceramic Fan Heater  
**Model number(s):** Devil2800PTC  
**Serial / batch Number:** N/A  
**Date of Issue:** 08/06/2021

Signed:

J.A. Clarke  
Director

DEVIL2800PTC CE.DOC

Page 1 of 1



Hemmill Street, Epping, Essex CM16 4LG

## DECLARATION OF CONFORMITY

This is an important document and should be retained.

We hereby declare that this product(s) complies with the following statutory requirement(s):

- Electromagnetic Compatibility Regulations 2016*
- Electrical Equipment (Safety) Regulations 2016*
- The Restriction of the Use of Certain Hazardous Substances in Electrical and Electronic Equipment Regulations 2012*
- The Eco-design for Energy-Related Products and Energy Information (Amendment) Regulations 2020*

The following standards have been applied to the product(s):

- EN55014-1:2017, EN 55014-2:2015, EN 61000-3-3:2013, EN 61000-3-2:2019, EN 60335-1:2012+A11+A13, EN 60335-2-30:2009+A11, EN 62233:2008.

The technical documentation required to demonstrate that the product(s) meet(s) the requirement(s) of the aforementioned legislation has been compiled and is available for inspection by the relevant enforcement authorities.

The UKCA mark was first applied in: 2021

**Product Description:** 2.8 kW PTC Ceramic Fan Heater  
**Model number(s):** Devil2800PTC  
**Serial / batch Number:** N/A  
**Date of Issue:** 08/06/2021

Signed:

J.A. Clarke  
Director

DEVIL2800PTC UKCA.DOC

Page 1 of 1

# A SELECTION FROM THE VAST RANGE OF

# Clarke®

## QUALITY PRODUCTS



### AIR COMPRESSORS

From DIY to industrial, Plus air tools, spray guns and accessories.

### GENERATORS

Prime duty or emergency standby for business, home and leisure.

### POWER WASHERS

Hot and cold, electric and engine driven - we have what you need

### WELDERS

Mig, Arc, Tig and Spot. From DIY to auto/industrial.

### METALWORKING

Drills, grinders and saws for DIY and professional use.

### WOODWORKING

Saws, sanders, lathes, mortisers and dust extraction.

### HYDRAULICS

Cranes, body repair kits, transmission jacks for all types of workshop use.

### WATER PUMPS

Submersible, electric and engine driven for DIY, agriculture and industry.

### POWER TOOLS

Angle grinders, cordless drill sets, saws and sanders.

### STARTERS/CHARGERS

All sizes for car and commercial use.



## PARTS & SERVICE: 0208 988 7400

**Parts Enquiries**  
[Parts@clarkeinternational.com](mailto:Parts@clarkeinternational.com)

**Servicing & Technical Enquiries**  
[Service@clarkeinternational.com](mailto:Service@clarkeinternational.com)

SALES: UK 01992 565333 or Export 00 44 (0)1992 565335

**Clarke** INTERNATIONAL Hemnall Street, Epping, Essex CM16 4LG  
[www.clarkeinternational.com](http://www.clarkeinternational.com)