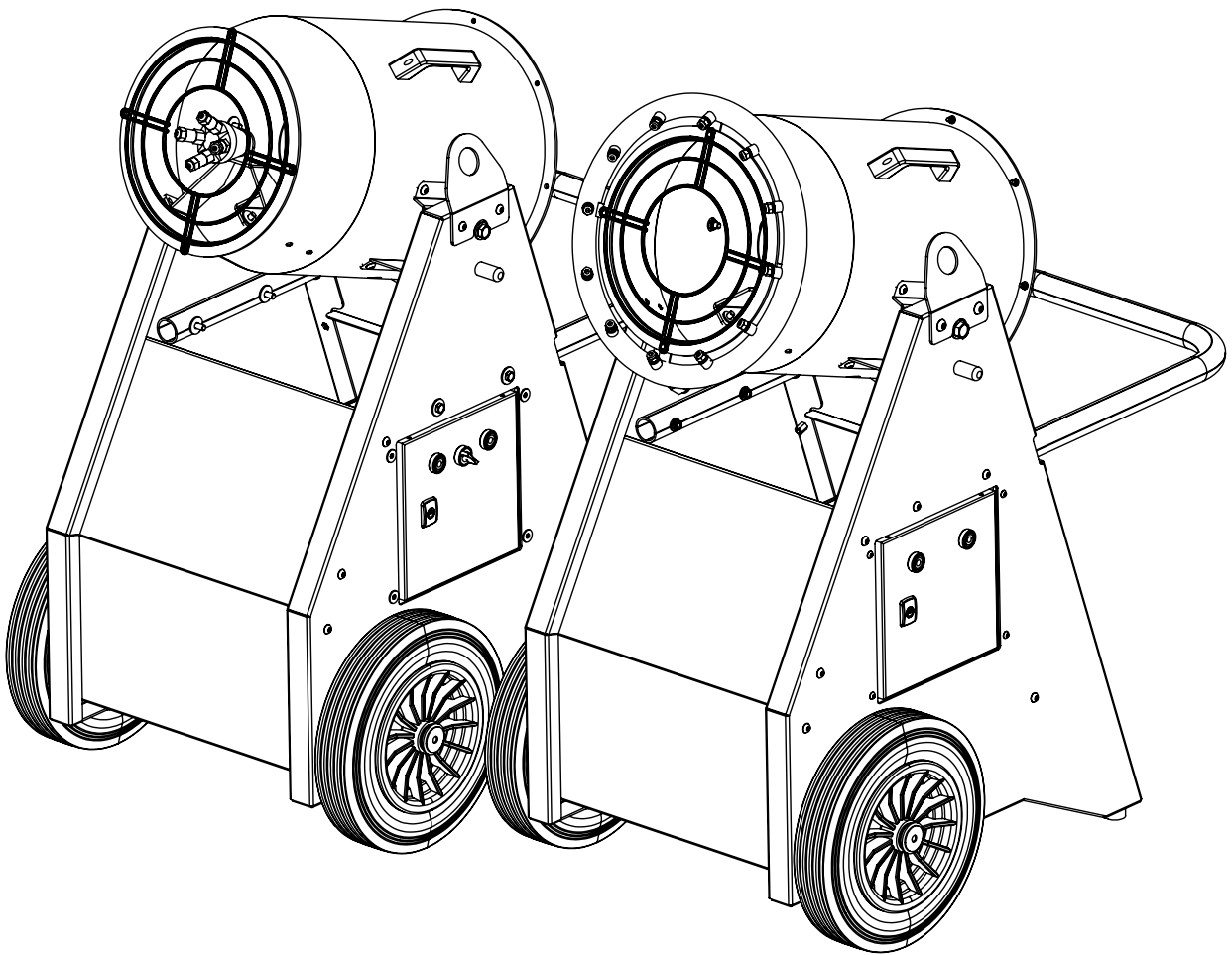


OPERATION & MAINTENANCE MANUAL



CannonMister Series CM10-HP & CM10-LP Portable Dust Suppression
Machines

IMPORTANT

Read, understand and obey these safety rules and operating instructions before operating or maintaining this machine

Only trained and authorized personnel shall be permitted to operate this machine. This manual should be considered a permanent part of your machine and should remain with the machine at all times. If you have any questions, please contact Dustquip

Contents

INTRODUCTION
GENERAL INFORMATION
WARRANTY
SAFETY
LEGEND
CONTROLS
PRE-OPERATION INSPECTION
MAINTENANCE
FUNCTION TESTS
WORKPLACE INSPECTION
OPERATING INSTRUCTIONS
TRANSPORT INSTRUCTIONS
DECALS
SPECIFICATIONS
PARTS DIAGRAM & LIST
SERVICE RECORD

HOW TO CONTACT US

Interquip International Ltd (UK)

+44(0) 1454 513 000

Quercus Court
Armstrong Way
Yate
BS37 5NG

www.interquip.uk
info@interquip-uk.net

Interquip (USA)

+1 (203) 322-2600

50 Washington St
Norwalk
CT 06854
USA

www.interquip.net
info@interquip.net

INTRODUCTION & GENERAL INFORMATION

INTRODUCTION

Thank you for choosing a Dustquip CannonMister

Please take time to carefully read the contents of this manual before you commence using the CannonMister. Ensure everyone responsible for its use is fully conversant with the procedures for preparing for use, operating and maintaining the CannonMister

By following, understanding and practicing the information and procedures in this manual, your Dustquip CannonMister will give you many years of reliable and safe use.

Certain information contained in this manual is governed by law and is subject to review and change without prior notice. Great care however, has been taken to ensure that the information in this manual is correct at time of publication. However, it is the owners/users sole responsibility to ensure that they fully comply with all legal requirements. Dustquip cannot and will not accept any liability for any inaccuracy or incorrectly stated legal requirements

Dustquip maintains a policy of continuous product improvement. We reserve the right to alter pump, engine, motor & performance specifications without prior notice.

GENERAL INFORMATION

The information contained in the Handbook is correct at the time of publication, and can be altered by the manufacturers without prior notice.

The Operator must read this handbook and the motor/engine & pump operators handbook (appended to this document) and be familiar with all controls before operating the equipment.

The contents of this handbook are a guide to the machines control, operation, operating scope and maintenance. It is not a training manual.

These are the original Instructions in the English Language issued by Dustquip.

The Operation Handbook must be stored near the machine in an environment protected against humidity and heat. The handbook must be attached to the machine in the event it is hired or sold. Damaging, modifying or removing part of the manual is prohibited.

WARRANTY CONDITIONS

The product is covered by a 12* month or 500 hour (whichever is soonest) warranty. Dustquip undertakes to replace or repair, free of charge, any defect which Dustquip considers to be due to faulty workmanship or material within 12 months of sale date, except for:

1. Defects arising from neglect, misuse or unauthorised modifications.
2. Damage caused by abuse, misuse, dropping or other similar damage caused by or because of failure to follow transportation, storage, loading or operation instructions.
3. Alterations, additions or repairs carried out by persons other than the Manufacturer or their recognised distributors.
4. Transportation or shipment costs to and from the Manufacturer or their recognised agents, for repair or assessment against a warranty claim, on any product or component.
5. Materials and/or labour costs to renew, repair or replace components due to fair wear and tear.
6. Faults arising from the use of non-standard or additional parts, or any consequential damage or wear caused by the fitting or use of such parts.
7. Failure to maintain the equipment according to the maintenance schedule
8. Damage caused by misfuelling & incorrect voltage supply

Dustquip International and/or their recognised agents, directors, employees or insurers will not be held liable for consequential or other damages, losses or expenses in connection with, or by reason of, or due to the inability to use their product for any purpose.

*It is the customers/user responsibility to report any warranty issues to Dustquip in a timely manner. Back dated warranty issues reported outside of the warranty period will not be accepted.

All warranty work will be carried out at an Dustquip authorised repair centre, goods must be returned at the customers expense.

SAFETY RULES

CannonMister Series CM10-HP & CM10-LP Portable Dust Suppression Machines



DANGER

Failure to obey the instructions and safety rules in this manual will result in death or serious injury.

Do Not Operate Unless:

You learn and practice the principles of safe machine operation contained in this operators manual.

You read, understand and obey the manufacturer's instructions and safety rules - safety and operators manuals and machine decals, employers safety rules and worksite regulations & applicable governmental regulations

You are properly trained to safely operate the machine

1. Avoid hazardous situations. Know and understand the safety rules before going on to the next section
2. Always perform a pre-operation inspection
3. Always perform function tests prior to use
4. Inspect the workplace
5. Only use the machine as it was intended

ELECTROCUTION HAZARDS

This machine is not electrically insulated and will not provide protection from contact with or proximity to electrical current

Do not operate the machine during lightning or storms

Do not use the machine as a ground for welding

Ensure safe routing of power cable to minimise risk of electrocution



EXPLOSION AND FIRE HAZARDS

Do not operate the machine in hazardous locations, or locations where potentially flammable or explosive gases or particles may be present



SETUP HAZARDS

Check work area for obstructions and other possible hazards. The machine discharges water which could cause slip hazards, your RAMS will need to take this into account

Do not use the machine whilst under the influence of alcohol or drugs (prescription or recreational)

Ensure machine is sited properly on level stable ground

Do not alter or disable machine components that in any way affect the safety and stability

Be aware of ground surface prior to installation

Ensure any loose items which could be sucked into the fan, causing damage or loss of performance, are tidied away before starting the machine

Do not use the machine on a moving or mobile surface or vehicle

Ensure tyres are in good condition

Do not ride on machine

Do not alter or disable any safety switches or guards

Do not operate the machine in strong or gusty winds

BODILY INJURY HAZARDS

Use common sense and planning when positioning and using the machine

Keep hands & limbs away from rotating parts and pinch points

Always wear the correct PPE



DAMAGED MACHINE HAZARDS

Do not use a damaged or malfunctioning machine

Conduct a thorough pre-operation inspection of the machine and test all functions before work shift. Immediately remove from service a damaged or malfunctioning machine & report it to your company manager/hire provider.

Ensure all maintenance has been carried out as specified in this manual.

Be sure all decals are in place and legible.

COMPONENT DAMAGE HAZARDS

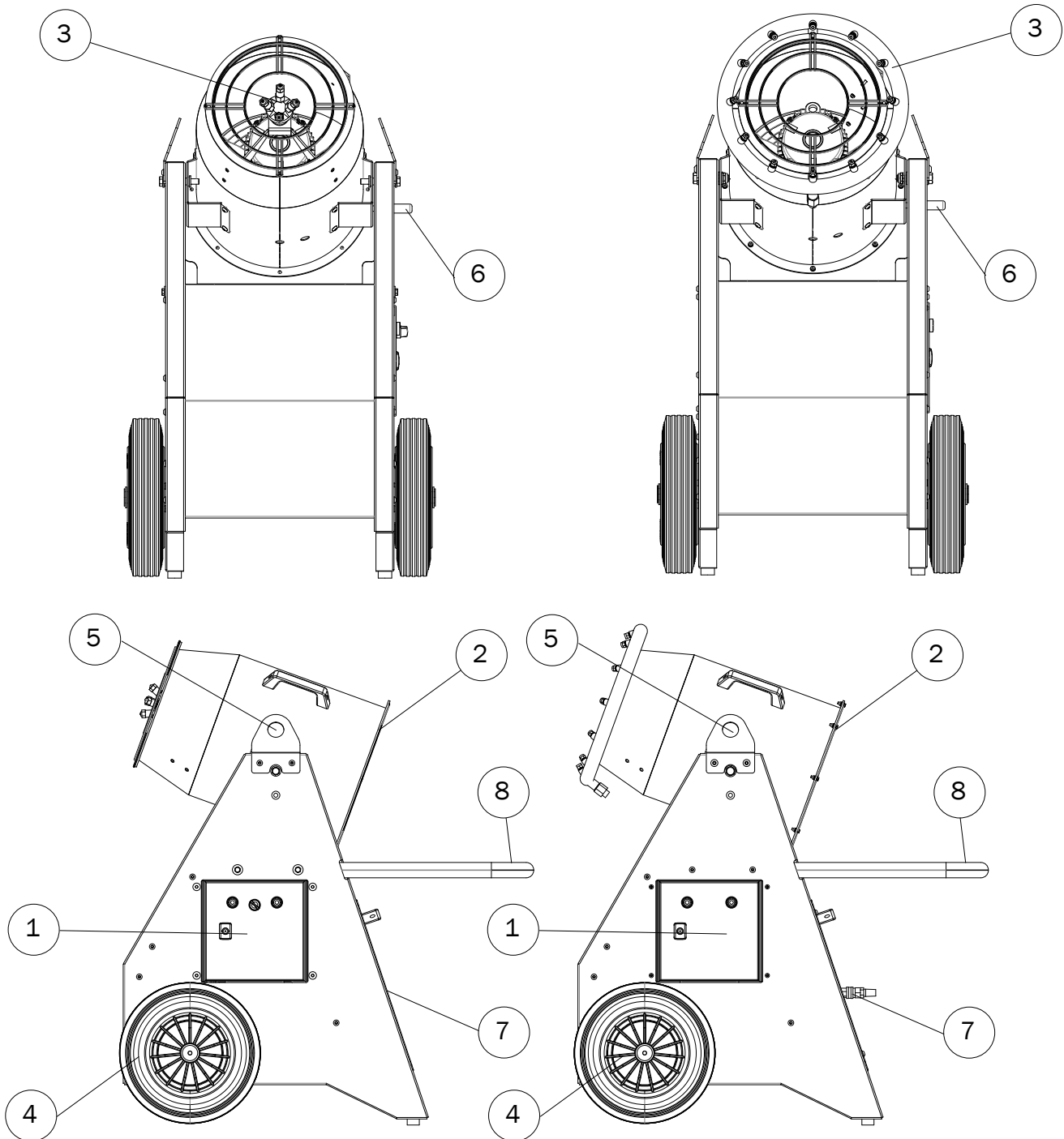
When using a generator, ensure it is fitted with a voltage regulator before use & is adequately grounded

Do not partially or totally cover or block the fan inlet, serious motor damage/overheating/fire could occur

Ensure constant water supply to pump (HP Version) pump damage will occur if allowed to run dry

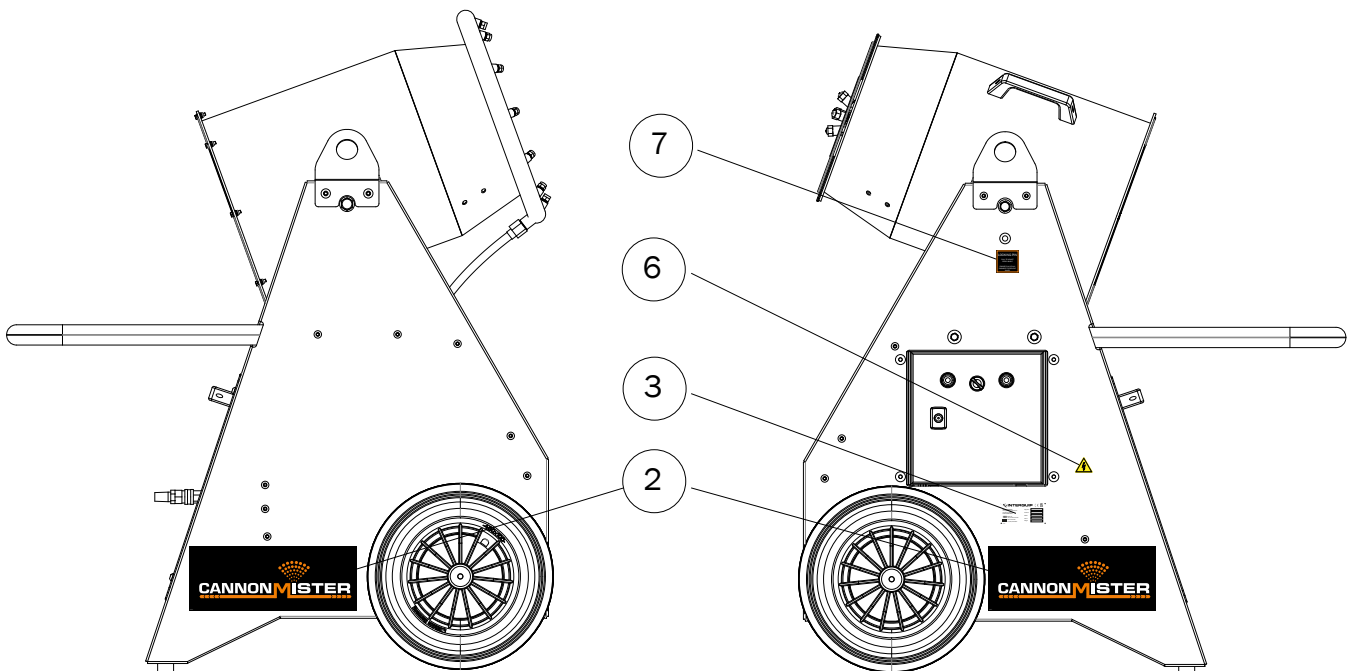
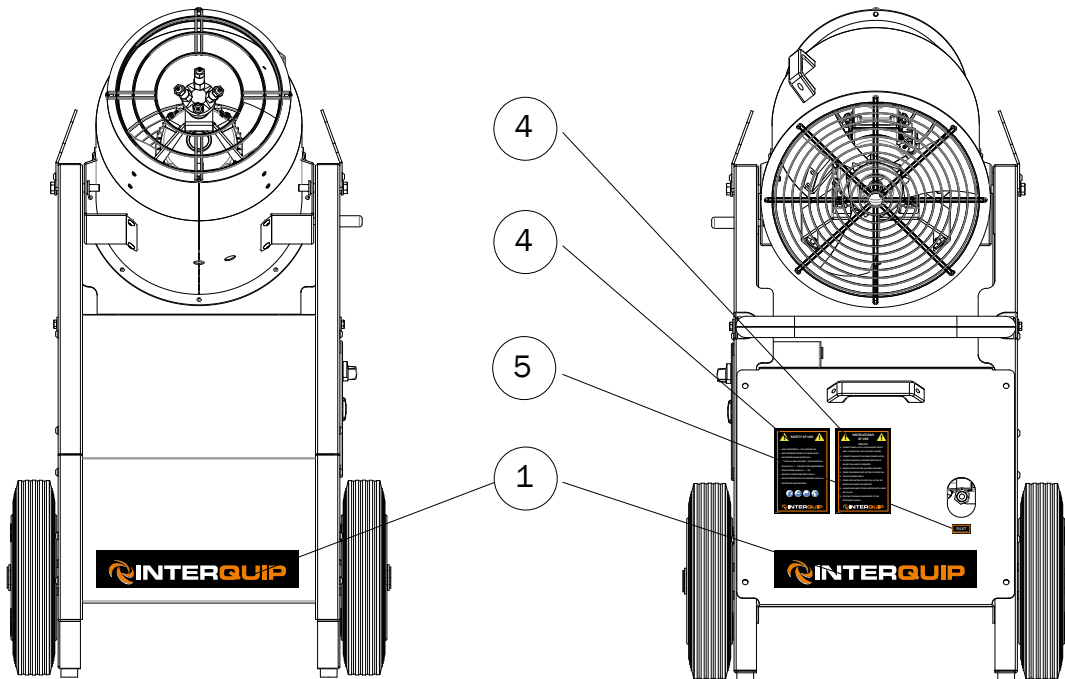
Do not use the machine as a ground for welding

LEGEND



1. Machine Controls
2. Air Inlet
3. Mist Generator
4. Wheel
5. Lifting Eye
6. Drum Angle Locking Pin
7. Water Inlet
8. Machine Handle

DECALS



1. Dustquip Decal

2. CannonMister Decal

3. Serial Plate

4. Safe Use Decal

5. Water Inlet Decal

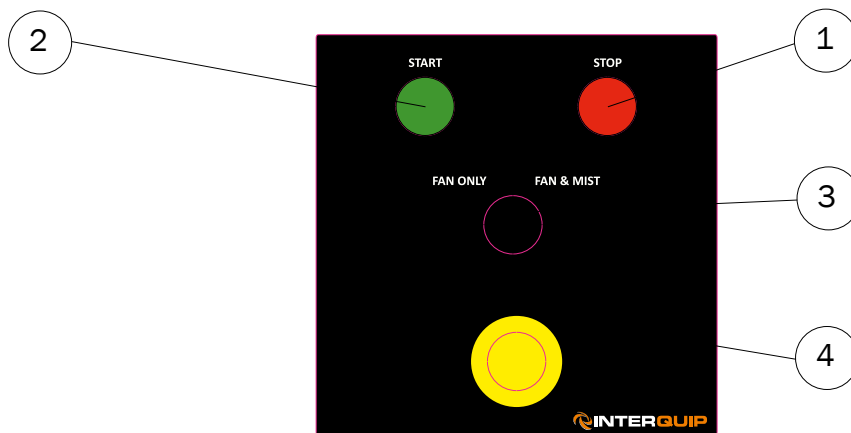
6. High Voltage Decal

7. Locking Pin Decal

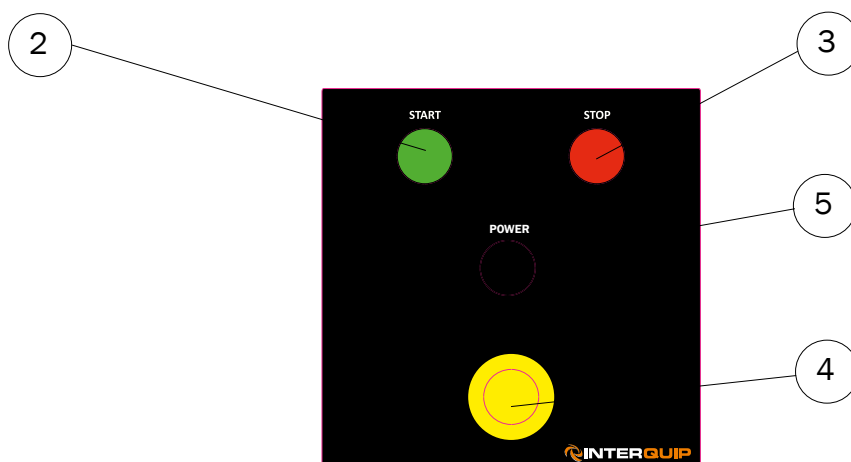
8. Operation Decal

CONTROLS

HP Version



LP Version



1. Fan mode & Fan/Mist operation selector (HP Version only)
2. Start button (All Versions)
3. Stop Button (All Versions)
4. Emergency Stop (All Versions)
5. Power Present Lamp (All Versions)

PRE-OPERATION INSPECTION



DANGER

DO NOT OPERATE UNLESS:

You learn and practice the principles of safe machine operation contained in this operators manual.

1. Avoid hazardous situations
2. Always perform a pre-operation inspection. Know and understand the pre-operation inspection before going on to the next section
3. Always perform function tests prior to use
4. Inspect the workplace
5. Only use the machine as it was intended

FUNDAMENTALS

It is the responsibility of the operator to perform a pre-operation inspection and routine maintenance

The pre-operation inspection is a visual inspection performed by the operator prior to each work shift

The inspection is designed to discover if anything is apparently wrong with a machine before the operator performs the function tests

The pre-operation inspection also serves to determine if routine maintenance procedures are required. Only routine maintenance items specified in this manual may be performed by the operator.

Refer to the list on the next page and check each of the items and locations for modifications, damage or loose/missing parts.

A damaged or modified machine must never be used. If damage or variation from factory delivered condition is discovered, the machine must be tagged and removed from service

Repairs to the machine may only be made by a qualified service technician according to the manufacturers specifications. After repairs are completed, the operator must perform a pre-operation inspection again before going on to the function tests

Scheduled maintenance inspections shall be performed by qualified service technicians, according to the manufacturers specifications.

PRE OPERATION INSPECTION:

Be sure that all decals are legible and in place.
See *“Decals” section*

Be sure the power cable is in good condition and not damaged

Ensure all guards are in place

Be sure the correct accessories & manual is present. See parts list

Check the following components or areas for damage, modifications and improperly installed or missing parts

1. Electrical components
2. Wiring
3. Power Plugs
4. Fan & Guards
5. Pipe work & Inlet filter
6. Wheels & Tyres
7. Nuts, bolts & other fasteners

Check entire machine for:

1. Cracks in welds or structural components
2. Dents or damage to the machine
3. Be sure that all structural and other critical components are present and all associated fasteners are in place and properly tightened

MAINTENANCE



OBSERVE AND OBEY:

Only routine maintenance items specified in this manual shall be performed by the operator.

Scheduled maintenance inspections shall be completed by qualified service technicians, according to the manufacturers specifications and the requirements specified in the responsibilities manual

MAINTENANCE SYMBOLS LEGEND:

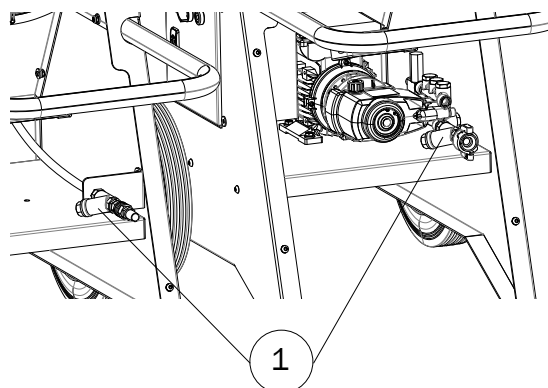
NOTICE

The following symbols have been used in this manual to help communicate the intent of the instructions. When one or more of the symbols appear at the beginning of a maintenance procedure, it conveys the meaning below



Indicates tools will be needed to carry out this operation

INLET FILTER CHECKING & CLEANING



Maintaining a clean inlet (1) filter is essential to good machine performance. Operating the machine with a clogged inlet filter will result in degraded performance and could damage the pump (HP version)

NOTICE

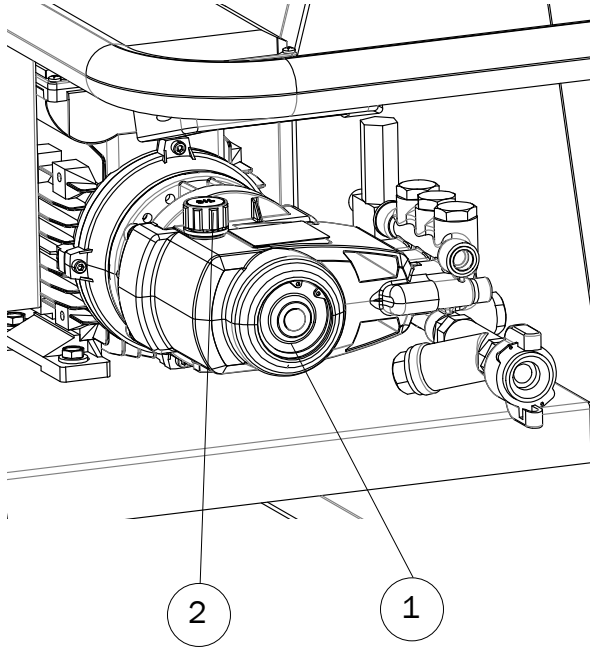
**CHECK FILTER WITH WATER AND POWER
SUPPLY TURNED OFF AND DISCONNECTED**

Tools Required:

- 5mm Allen Wrench
 - Adjustable spanner
1. Remove the rear access cover (below the handle) by removing the Allen headed bolts
 2. Loosen the Y strainer access plug using a suitable spanner
 3. Carefully unwind the plug and withdraw the filter gauze from filter body
 4. Clean gauze with clean water
 5. Insert the gauze back into the filter body, screw in the access plug ensuring the gasket is in place and in good condition
 6. Tighten access plug
 7. Refit rear access cover & fully tighten fixings

CHECK OIL LEVEL

(HP version only)



Ensuring the pump has the correct oil level is essential to prevent possible pump damage. The oil level can be observed through the sight glass (1). The level can be topped up via the oil port (2).

The correct oil level is approx halfway up the sight glass.

The correct oil grade can be found in the specifications section of this manual

NOTICE

CHECK OIL WITH WATER AND POWER SUPPLY TURNED OFF AND DISCONNECTED

Tools Required:

- 5mm Allen Wrench

1. Remove the rear access cover (below the handle) by removing the Allen headed bolts
2. Check oil level and condition via the sight glass (1).
3. If oil is required, remove the vent plug by twisting clockwise until it is free of the pump housing
4. Pour the correct grade oil into the pump until the level reaches approx halfway up the sight glass
5. Refit vent plug
6. Refit rear access cover

OIL APPEARANCE

Should the oil take on a milky appearance please contact your Dustquip repair centre. This could indicate internal pump seal failure & water contamination. The machine must be taken out of service until the pump has been inspected & repaired if necessary.

If the oil has taken on a dark brown/black appearance an oil change is recommended. Oil discolouration will occur during normal operation - this is to be expected

The oil should have a bright clear golden appearance.

REAR GUARD, FAN BLADES & MOTOR CHECK

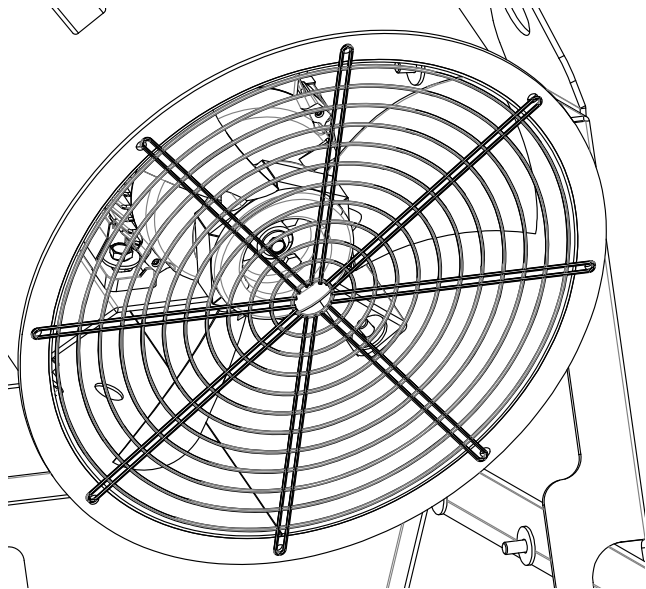
The fan blades are high performance & high speed, it is essential that the blades are regularly checked for damage & dirt build up. A blade with excessive dirt build up or damage could un-balance it potentially causing a catastrophic failure.

Ensure any buildup of dust on the rear finger guard is removed

Carefully check the blades for damage eg, cracks, chips & dents.

If damage is observed, tag and remove the machine from service immediately. Contact your Dustquip repair centre.

REAR GUARD, FAN BLADES & MOTOR CHECK (Cont)



NOTICE

CHECK FAN & MOTOR WITH WATER AND POWER SUPPLY TURNED OFF AND DISCONNECTED

Tools Required:

- x2 10mm Spanners
 - Damp cloth
1. Remove the rear finger guard by loosening & removing all M5 bolts securing the guard to housing
 2. Check blades for damage & clean off dust build up with damp cloth
 3. Clean off dust from motor cooling fins with damp cloth
 4. Re-fit finger guard & securely attach bolts

NOTICE

NEVER RUN THE FAN WITH THE GUARD REMOVED. SERIOUS BODILY HARM/DEATH COULD OCCUR

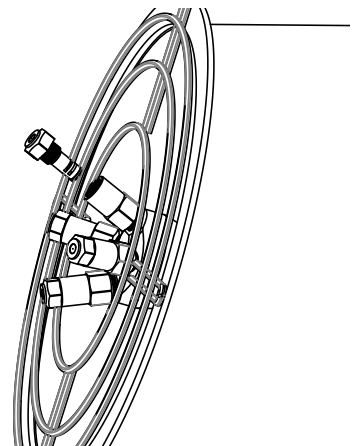
NOZZLE FILTERS, CHECKING & CLEANING



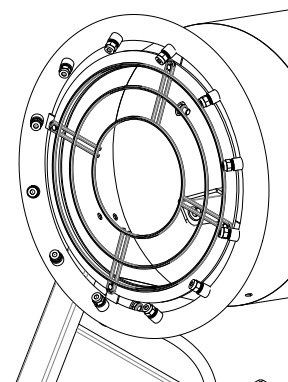
NOTICE

CHECK NOZZLES WITH WATER AND POWER SUPPLY TURNED OFF AND DISCONNECTED

HP Version



LP Version



Tools Required:

- 14mm Spanner (LP Version)
- 17mm Spanner (HP Version)
- 19mm Spanner (HP Version)

NOZZLE FILTERS, CHECKING & CLEANING (CONT)

HP Version

Use a 19mm spanner to hold the base of the nozzle steady and with the 19mm spanner loosen the head of the Nozzle.

Once loose twist the nozzle head anti clockwise until thread is clear of the body

Carefully withdraw the nozzle head and filter from the body

Clean the filter mesh if required.

LP Version

Use a 14mm spanner to loosen the head of the Nozzle.

Once loose twist the nozzle head anti clockwise until thread is clear of the body

Carefully withdraw the nozzle head and filter from the body

Clean the filter mesh if required.

FUNCTION TESTS



FUNDAMENTALS:

The function tests are designed to discover any malfunctions before the machine is put into service

The operator must follow the step by step instructions to test all machine functions

A malfunctioning machine must never be used. If malfunctions are discovered, the machine must be tagged and removed from service

Repairs to the machine may only be made by a qualified service technician, according to the manufacturers specifications

After repairs are completed, the operator must perform a pre-operation inspection and function tests again before putting the machine into service

DO NOT USE UNLESS:

You learn and practice the principles of safe machine operation contained in this operators manual.

1. Avoid hazardous situations
2. Always perform function tests prior to operation. Know and understand the function tests before going on to the next section
3. Always perform function tests prior to use
4. Inspect the workplace
5. Only use the machine as it was intended

FUNCTION TESTS:

Select an area that is firm, level and free of obstructions

1. Plug the power plug into a suitably sized power socket
2. Observe the Power On Lamp on the control panel, it should illuminate

AT THE CONTROLS:

1. Press the emergency stop button, ensure it “clicks” in to position
2. Press the start button - fan should not start
3. Turn the emergency stop button clockwise, it will then spring back out.

TEST THE FAN FUNCTION:

1. Ensure the Mode Selector switch is set to “Fan Only” (HP Version only)
2. Press the green start button - fan should start (All versions)

TEST THE MIST FUNCTION (HP VERSION ONLY:

1. Ensure water is connected to the inlet and water supply is turned on
2. Ensure the Mode Selector switch is set to “Fan & Mist”
3. Press the green start button - fan should start
4. After a 5 second delay the mist will start

VISUAL CHECK:

1. Check all water hoses for signs of wear, cracks & leaks
2. Check power cable for damage to insulation
3. Check all buttons are present & not damaged
4. Check fan blades are not damaged & all guards in place
5. Check all nozzles are atomising correctly with no uneven spray pattern (Nozzles should produce an even cone of mist)

If the machine fails any of these function tests, it should be removed from service and repaired

WORKPLACE INSPECTION



FUNDAMENTALS:

The workplace inspection helps the operator determine if the workplace is suitable for safe machine operation. It should be performed by the operator prior to moving the machine to the workplace

It is the operators responsibility to read and remember the workplace hazards, then watch for and avoid them while moving, setting up and operating the machine.

DO NOT USE UNLESS:

You learn and practice the principles of safe machine operation contained in this operators manual.

1. Avoid hazardous situations
2. Always perform function tests prior to operation
3. Inspect the workplace. Know and understand the function tests before going on to the next stage
4. Only use the machine as it was intended

WORKPLACE INSPECTION:

Be aware of and avoid the following hazardous situations

1. Bumps, floor obstructions or debris
2. Slopes
3. Unstable or slippery surfaces
4. Overhead obstructions
5. Hazardous locations
6. Inadequate surface support to withstand all load forces imposed by the machine
7. Wind and weather conditions
8. The presence of unauthorised personnel
9. Low temperature & freezing conditions
10. Other possible unsafe conditions
11. Ensure any equipment or objects that could be damaged by water are removed from the area

OPERATING INSTRUCTIONS



DO NOT USE UNLESS:

You learn and practice the principles of safe machine operation contained in this operators manual.

1. Avoid hazardous situations
2. Always perform function tests prior to operation
3. Inspect the workplace. Know and understand the function tests before going on to the next stage
4. Only use the machine as it was intended

FUNDAMENTALS:

The Operating Instructions section provides instructions for each aspect of machine operation. It is the operators responsibility to follow all the safety rules and instructions in the operators, safety and responsibilities manuals

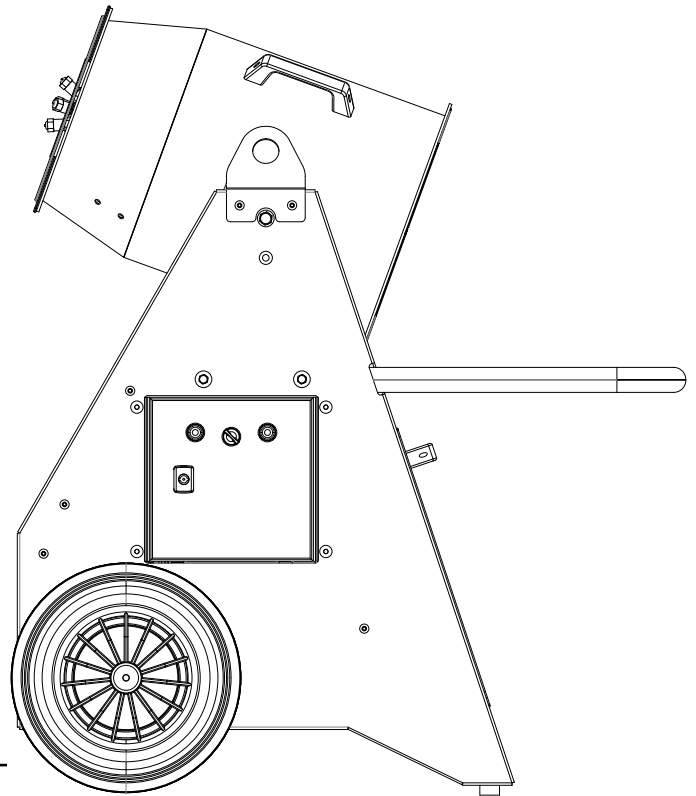
This Cannon Mister is designed to provide fan assisted dust suppression for a wide range of dust types. Only clean tap water must be used - please refer to the Legionella section for further information.

Care must be taken when positioning the machine that the water mist generated by the machine does not cause any unintended damage. Dustquip cannot be held responsible for any damage caused.

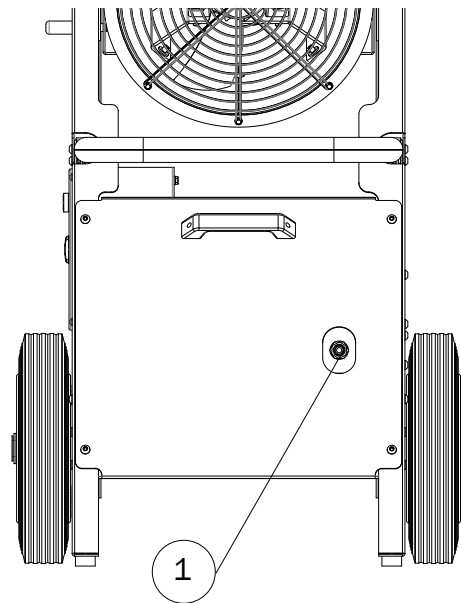
Only trained and authorized personnel should be permitted to operate a machine. If more than one operator is expected to use a machine at different times in the same work shift, they must be qualified operators and are all expected to follow all safety rules and instructions in the operators safety and responsibilities manuals. This means every new operator should perform a pre-operation inspection, function tests , and a workplace inspection before using the machine.

OPERATING INSTRUCTIONS:

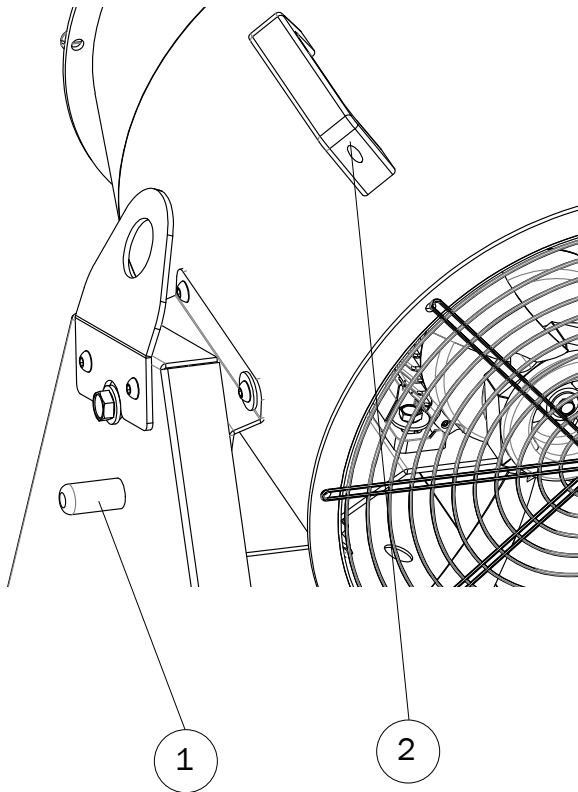
1. Before moving the machine, plan your route. Ensure there are not obstacles on your route. Ensure you have adequate man power to complete the set tasks.
 2. To move the unit, lift up on the handles and push the unit forwards and manoeuvre the unit similar to a wheelbarrow.
 3. Once the machine is in the desired location, ensure the front of the machine is pointing in the desired location and carefully lower the machine to the ground. Do not drop the machine.
-



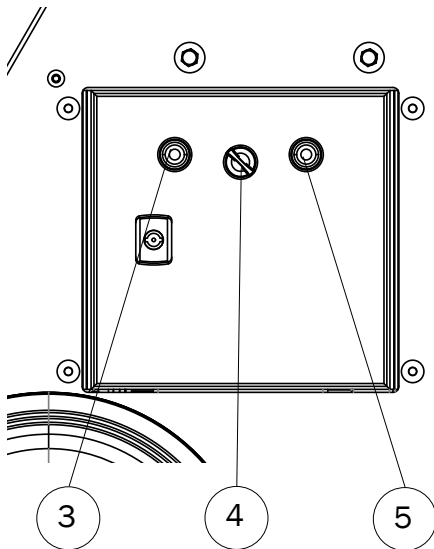
1. Connect the water to the inlet connection
(1) Do not turn on the water supply yet.
2. Connect power plug to suitable power socket and turn on supply.



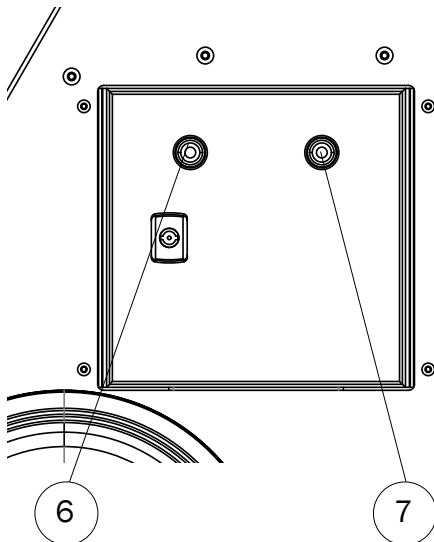
OPERATING INSTRUCTIONS (Cont):



1. To adjust the fan angle:
 2. Pull out Locking Pin (1)
 3. While Locking Pin is pulled out, use handle (2) to position fan to desired angle
 4. Release locking pin and gently continue rotate the fan handle to lock the fan angle.
-



1. To Start the machine (HP Version)
2. Ensure mode selector is set to Fan & Mist (4)
3. Turn on water supply
4. Press Start button (3) (mist will start approx 5 seconds after fan starts)
5. To Stop the machine
6. Press the Stop Button (5)



1. To Start the machine (LP Version)
2. Press the Start button (6)
3. Turn on water supply
4. To Stop the machine
5. Turn off water supply
6. Press the Stop button (7)

TRANSPORT INSTRUCTIONS



TIE DOWN & STRAPPING:

Only use the lifting eyes for strapping, do not place a strap over the fan housing, this could deform and cause a fan blade failure

DO NOT OVER TIGHTEN STRAPS:

Excessive tension of the straps will cause damage to the machine

OBSERVE AND OBEY:

Common sense and planning must be applied to control the movement of the machine when moving it with a forklift

The transport vehicle must be parked on a level surface

SECURING TO TRUCK OR TRAILER FOR TRANSIT:

Always check the machine is on a level surface with both wheels and both feet are in contact with the surface

Inspect the entire machine for loose or unsecured items

Ensure power cable is secured and placed within the machine

SPECIFICATIONS

CM10-HP	
Mist Distance M (Ft) (no wind)	10 M (32 Ft)
Surface coverage M ² (ft ²)	50-60 M ² (500-600 ft ²)
Water Consumption Lpm (gpm)	2 Lpm (.4 gpm)
Applications Indoor	Fine dust suppression, Odour, insect and germ control
Applications Outdoor	Fine dust suppression, Odour control and Cooling
Average Water Droplet Size μ	80 micron

CM10-LP	
Mist Distance M (Ft) (no wind)	10 M (32 Ft)
Surface coverage M ² (ft ²)	50-60 M ² (500-600 ft ²)
Water Consumption Lpm (gpm)	2 Lpm (.4 gpm) @ 4 bar
Applications Indoor	Fine dust suppression, Odour, insect and germ control
Applications Outdoor	Fine dust suppression, Odour control and Cooling
Average Water Droplet Size μ	92 micron

	CM10-HP-110V50	CM10-HP-120V60	CM10-HP-220V50
Voltage / Frequency	110V 50Hz	120V 60Hz	220V 50Hz
Current Consumption	32 Amps	28 Amps	16 Amps
Power Connection	32 A CEEFORM	30A Nema	16 A CEEFORM

	CM10-LP-110V50	CM10-LP-120V60	CM10-LP-220V50
Voltage / Frequency	110V 50Hz	120V 60Hz	220V 50Hz
Current Consumption	14 Amps	14 Amps	4.5 Amps
Power Connection	16 A CEEFORM	20A Nema	16 A CEEFORM
Dimensions mm (inch)	1100 L x 700 W x 1150 H (43"x28"x45")		
Weight Kg (Lbs)	40KG (88 Lbs)		
Number of Nozzles	12		
Fan Motor Kw	0.75		
Vertical Tilt Angle	-20° - +45°		
Oscillation	N/A		
Water Supply Connection	1/2" Hose Tail		
Required Water Pressure/ min flow	2-5 bar / 3 Lpm		
Water quality	Potable / Filtered		
Operating Temperature	+2 °C - 50 °C		

Required Oils		
Component	Specification	Volume Required
Gear Box (if fitted)	SAE90 Gear Oil	0.35l
Pump	SAE 10W40 (0.25L)	0.25l

LEGIONELLA HEALTH RISK



DANGER

WATER MISTING CAN CAUSE LEGIONELLA DISEASE:

One of the main health risks from contamination in engineering water systems is the bacterial infection Legionella.

This bacterium can be transmitted through water vapour or mist and inhaled, hence leading to respiratory infections.

The more severe cases are from Legionnaires disease, which can lead to symptoms of pneumonia and other secondary infections, in its worst case can lead to death.

The milder forms are Pontiac Fever and Lochgilhead fever.

***If you develop symptoms of Flu/
Pneumonia after operating this
machine seek urgent medical
attention.***

Legionella Microorganisms flourish in water temperatures of between 22°C and 45°C (71.6 - 113F), particularly, if an abundance of nutrients such as sludge, sediment or rust reside in the water system.

YOU MUST ENSURE:





- Drain system and supply tanks when not in use
- Only use drinking water supply
- Follow a Legionella risk assessment that meets the requirements of the local water authority regulations
- Follow regular tank/system cleaning procedures using disinfectant and/or steam.

MANUFACTURERS IDENTIFICATION DATA

Manufacturer	Dustquip t/a Interquip International Ltd
Brand	CannonMister
Head Office	Quercus Court, Armstrong Way, BS37 5NG
Telephone	01454 513 000
Email	info@dustquip.co.uk
Website	www.dustquip.co.uk

CE & UKCA MARKING

All machines are identified with a Model & Serial ID plate which includes the CE & UKCA marking

 DUSTQUIP  	
Manufactured By: Dustquip t/a Interquip International Ltd Armstrong Way, Yate Bristol, BS37 5NG	Mfg. Date: <input type="text"/>
	Serial No: <input type="text"/>
	Model: <input type="text"/>
	Power: <input type="text"/>
	Weight: <input type="text"/>
 Bristol UK +44 (0)1454 513 000	
SP001	

Some machines may have a UKCA label affixed to the machine adjacent to the Serial Number plate.

UKCA DECLARATION OF CONFORMITY

UK CA

Dustquip
t/a Interquip International Ltd
Declaration of Conformity
In accordance with UK Government Guidance

1. Product Model
 - a. Product: Mobile CannonMister Trolley
 - b. Model: CM10
 - c. Serial: 1000-99999
 - d. Specification: Trolley mounted electric powered high Pressure, low flow cannon misting unit.
2. Manufacturer
 - a. Name: Dustquip t/a Interquip International Ltd (UK)
 - b. Address: Quercus Court, Armstrong Way, Yate, BS37 5NG (UK)
3. This declaration is issued under the responsibility of the above mentioned manufacturer.
4. The object of the declaration described above is in conformity with the relevant UK Statutory Instruments and their amendments:

Supply of Machinery (Safety) Regulations 2008

Noise Emission in the Environment by Equipment for use Outdoors
Regulations 2001

Electromagnetic Compatibility Regulations 2016

Radio Equipment Regulations 2017 (where remote control fitted)

The Restrictions of the Use of Certain Hazardous Substances in Electrical and
Electronic Equipment Regulations 2012

Electrical Equipment (Safety) Regulations 2016

5. Additional information:
The technical documentation for the machinery is available from:

Name: Dustquip t/a Interquip International Ltd
Address: Quercus Court, Armstrong Way, Yate, BS37 5NG
Signed for & behalf of: Dustquip t/a Interquip International Ltd
Place of issue: Yate, United Kingdom
Name:

Position: Director

Signature: *Neal Davies*

CE DECLARATION OF CONFORMITY



Dustquip

t/a Interquip International Ltd
EC Declaration of Conformity

In accordance with EU Government Guidance

1. Product Model

- a. Product: Mobile CannonMister Trolley
- b. Model: CM10
- c. Serial: 1000-99999
- d. Specification: Trolley mounted electric powered high Pressure, low flow cannon misting unit.

2. Manufacturer

- a. Name: Dustquip t/a Interquip International Ltd (UK)
- b. Address: Quercus Court, Armstrong Way, Yate, BS37 5NG (UK)

3. This declaration is issued under the responsibility of the above mentioned manufacturer.

4. The object of the declaration described above is in conformity with the relevant EU Statutory Instruments and their amendments:

Machinery Directive 2006/42/EC

Outdoor Noise Directive 2000/14/EC

Electromagnetic Compatibility - Directive 2014/30/EU

Radio equipment - Directive 2014/53/EU

Restriction of the Use of certain Hazardous Substances in Electrical and Electronic Equipment (RoHS) - Directive 2002/95/EC

Low Voltage Directive 2014/35

5. Additional information:

The technical documentation for the machinery is available from:

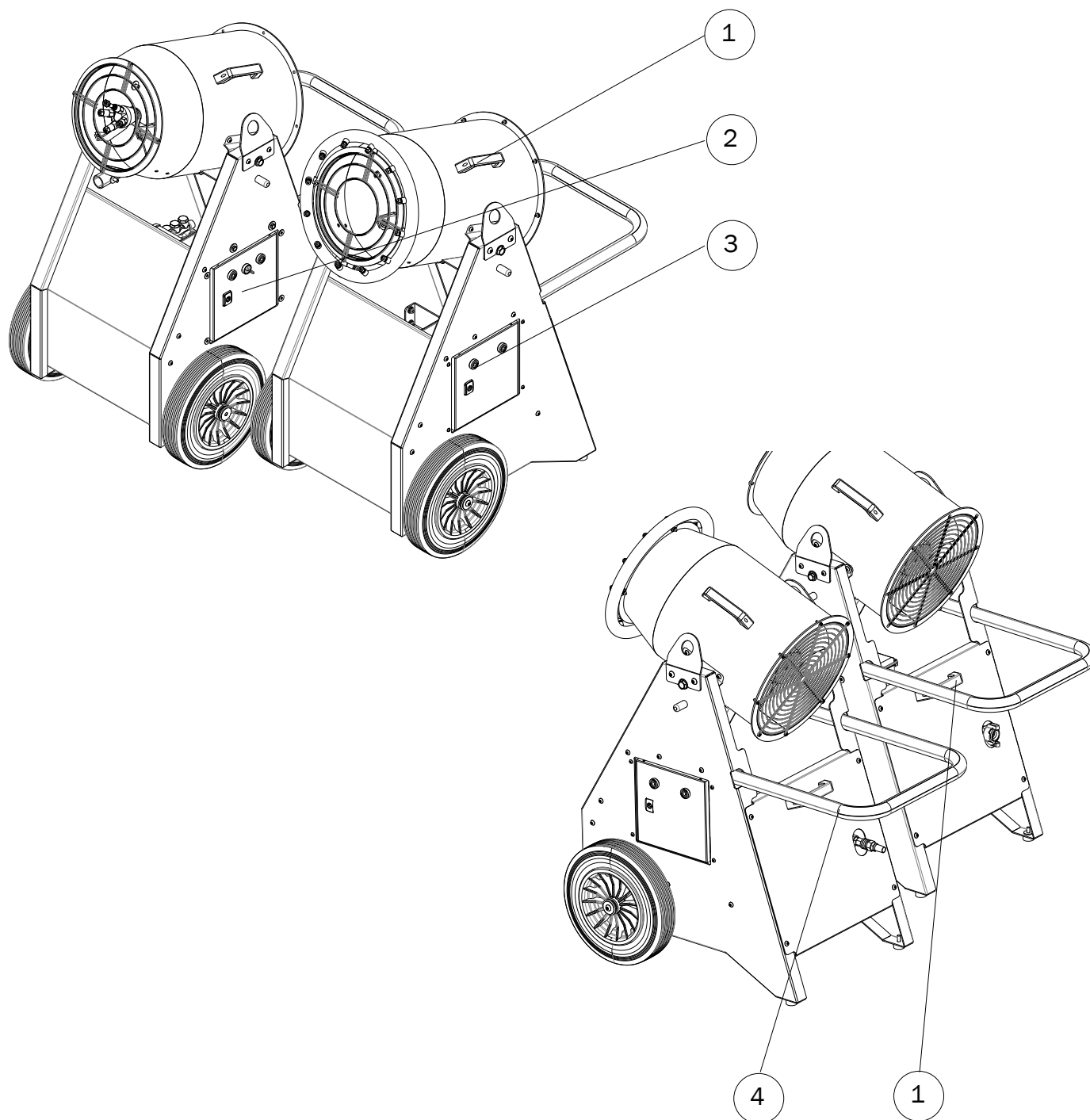
Name: Dustquip t/a Interquip International Ltd
Address: Quercus Court, Armstrong Way, Yate, BS37 5NG
Signed for & behalf of: Dustquip t/a Interquip International Ltd
Place of issue: Yate, United Kingdom
Name:

Position: Director

Signature: *Neal Davies*

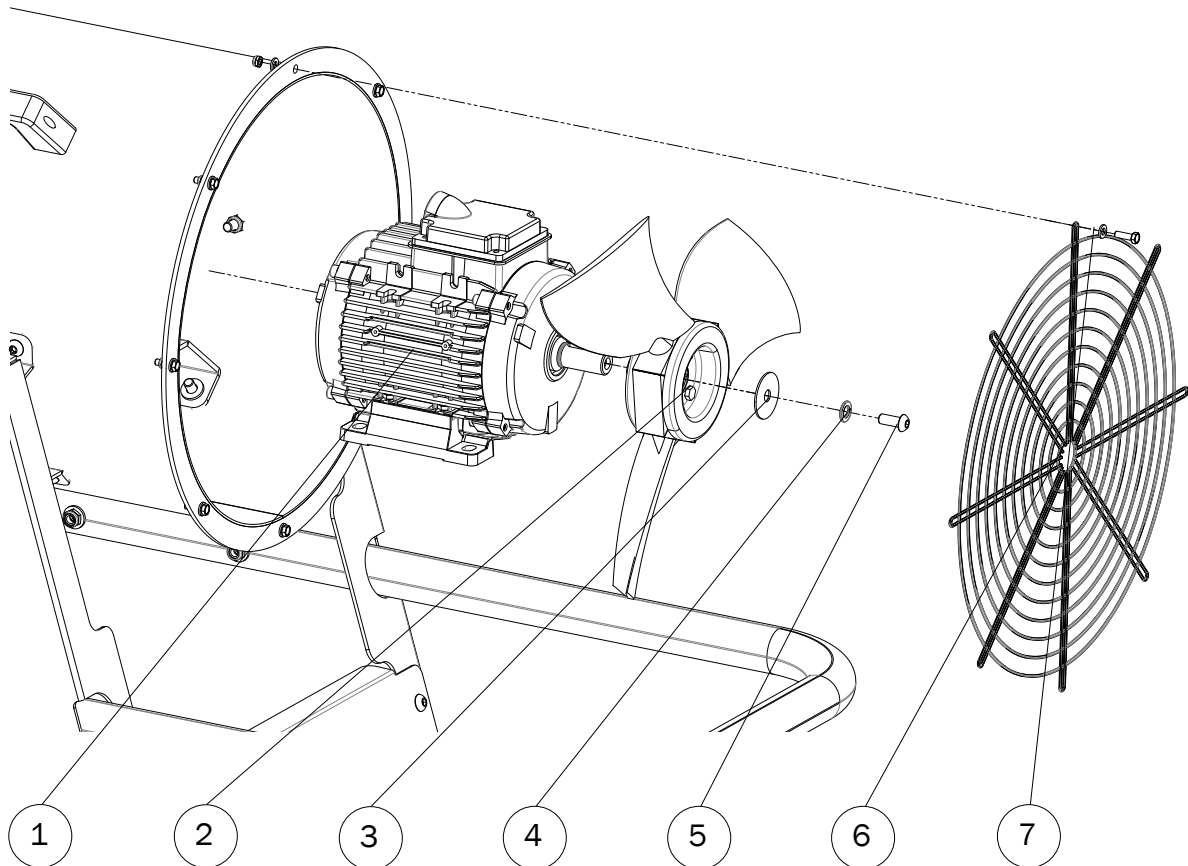
PARTS LISTS

GENERAL (All versions)



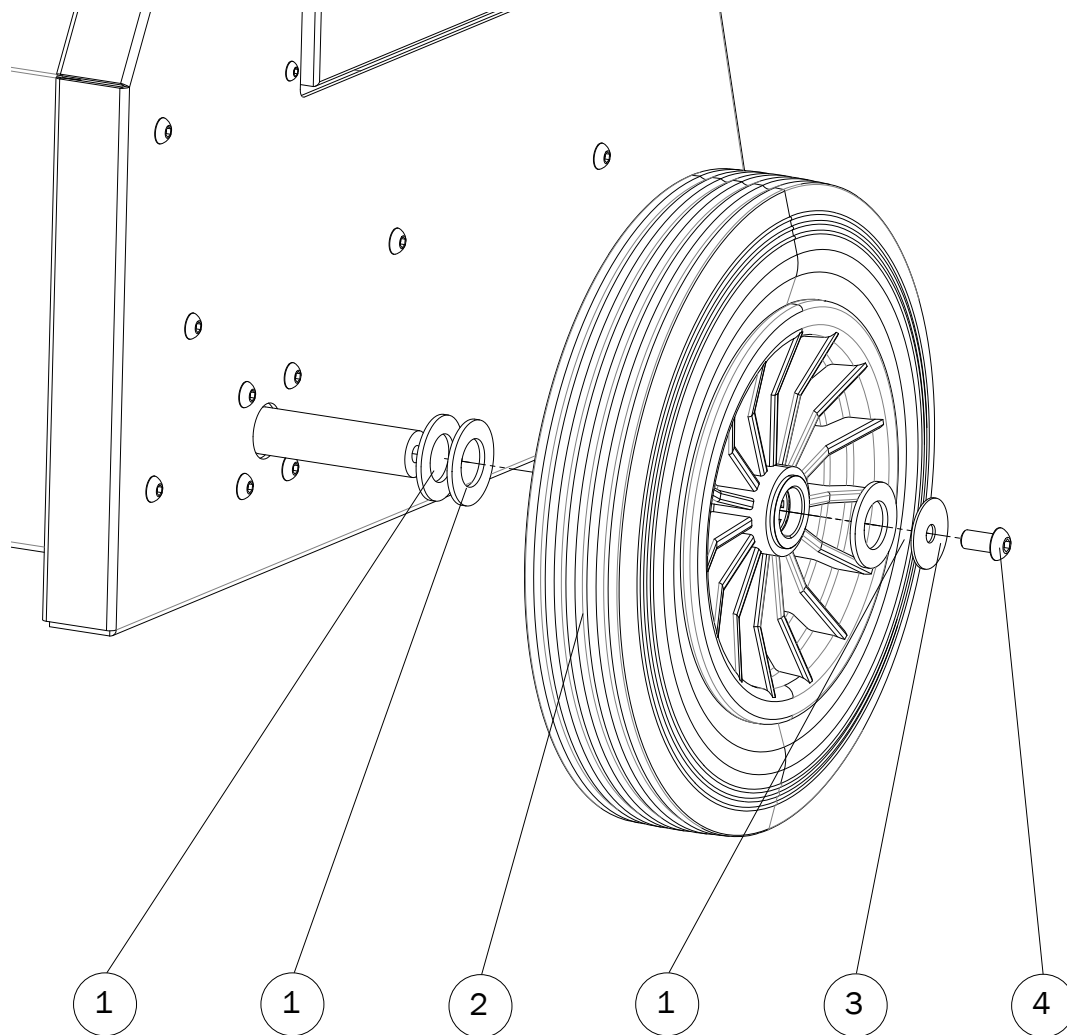
Number	Description	Part Number	Qty
1	Grab Handle	IM028	2
2	HP Version Control Panel	EA012	1
3	LP Version Control Panel	EA013	1
4	Machine Handle	CM10-10	1

FAN & MOTOR ASSEMBLY (All versions)



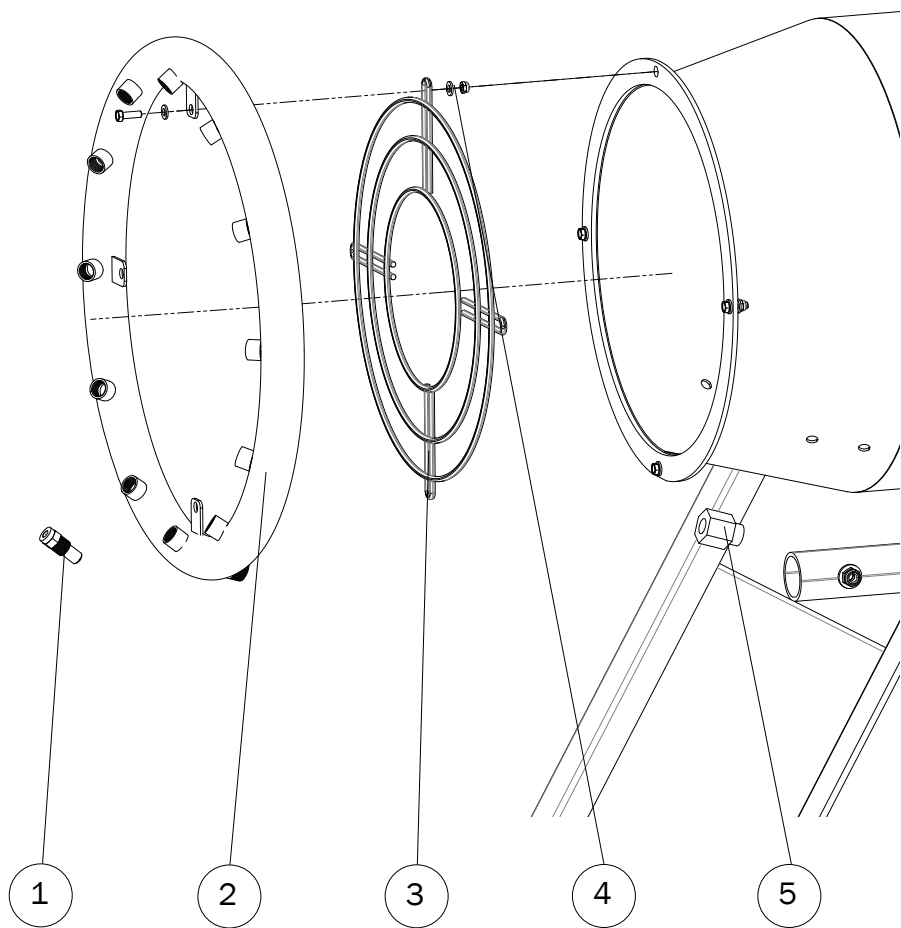
Number	Description	Part Number	Qty
1	110/120v TENV Fan Motor	MT003	1
2	355mm Fan for CM10	FN001	1
3	30mm Washer	FX-WASHER-P30-M10-BZP	1
4	10mm Spring Washer	FX-SWASHER-M10-BZP	1
5	M10 Retaining Bolt	FX-HBOLT-M10x25-BZP	1
6	Rear Finger Guard	CM10-17	1
7	Guard fixings	FX-HBOLT-M5x15-SS	8
		FX-WASHER-C-M5-SS	16
		FX-LNUT-M5-SS	8

WHEEL ASSEMBLY (All versions)



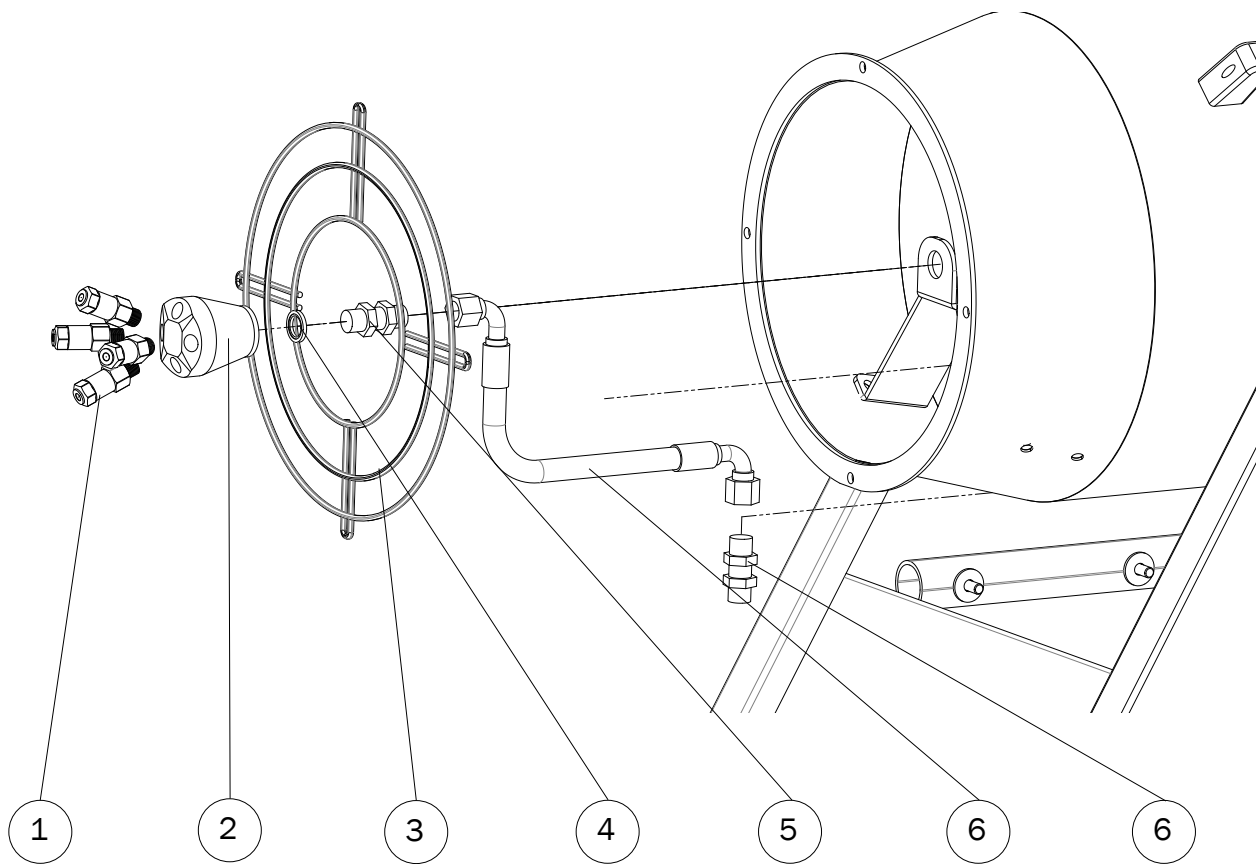
Number	Description	Part Number	Qty
1	30mm Wheel Spacer	FX-WASHER-C-M30-BZP	3
2	Wheel & Tyre Assembly	WT020	1
3	10mm Washer	FX-WASHER-C-M10-BZP	1
4	10mm Dome Head Bolt	FX-BHEAD-M10x25-BZP	1

MIST GENERATOR (LP Version)



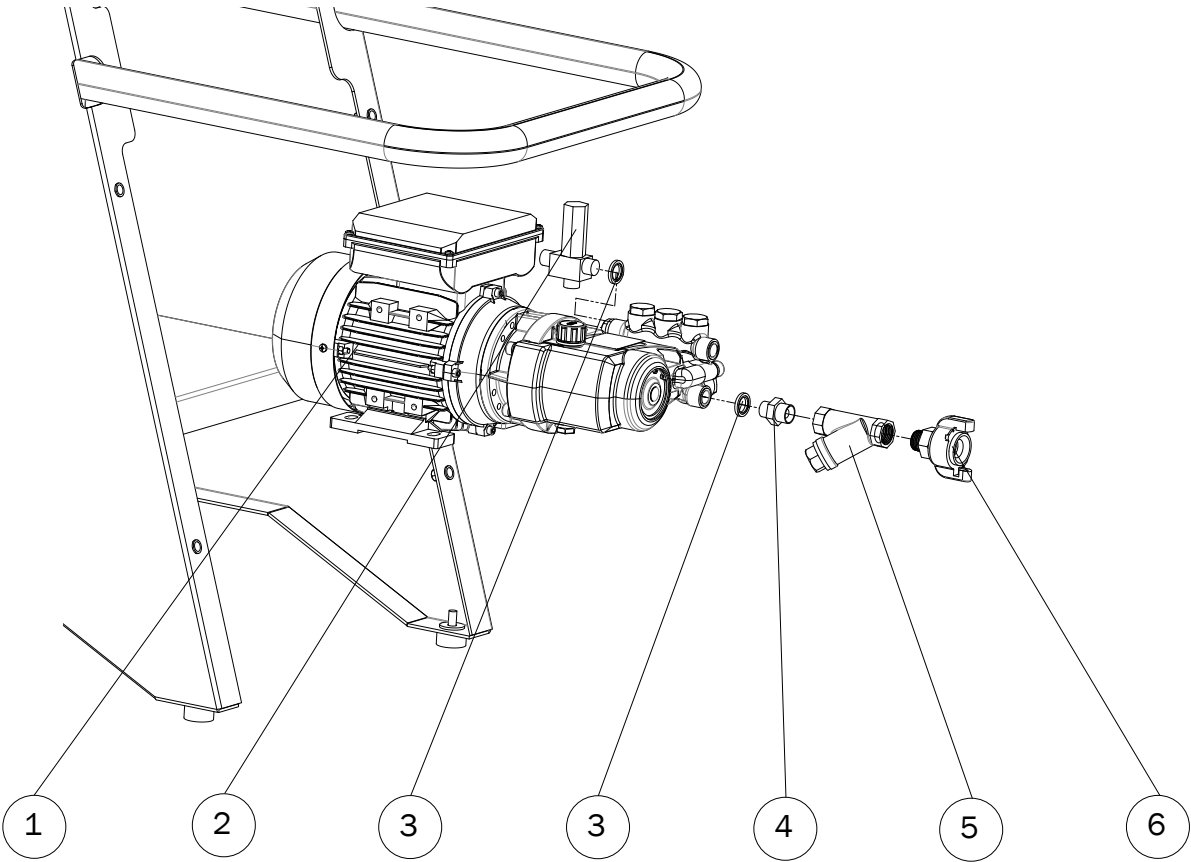
Number	Description	Part Number	Qty
1	Mist Nozzle	IQM-2-1/4"	12
2	Nozzle Manifold	CMM01-01	1
3	Front Finger Guard	CM10-15	1
4	Guard Fixings	FX-HBOLT-M5x15-SS FX-WASHER-C-M5-SS FX-LNUT-M5-SS	4 8 4
5	Manifold Adaptor	HF-ADAPTOR-1.2F-3.8M-BRASS	1

MIST GENERATOR (HP Version)



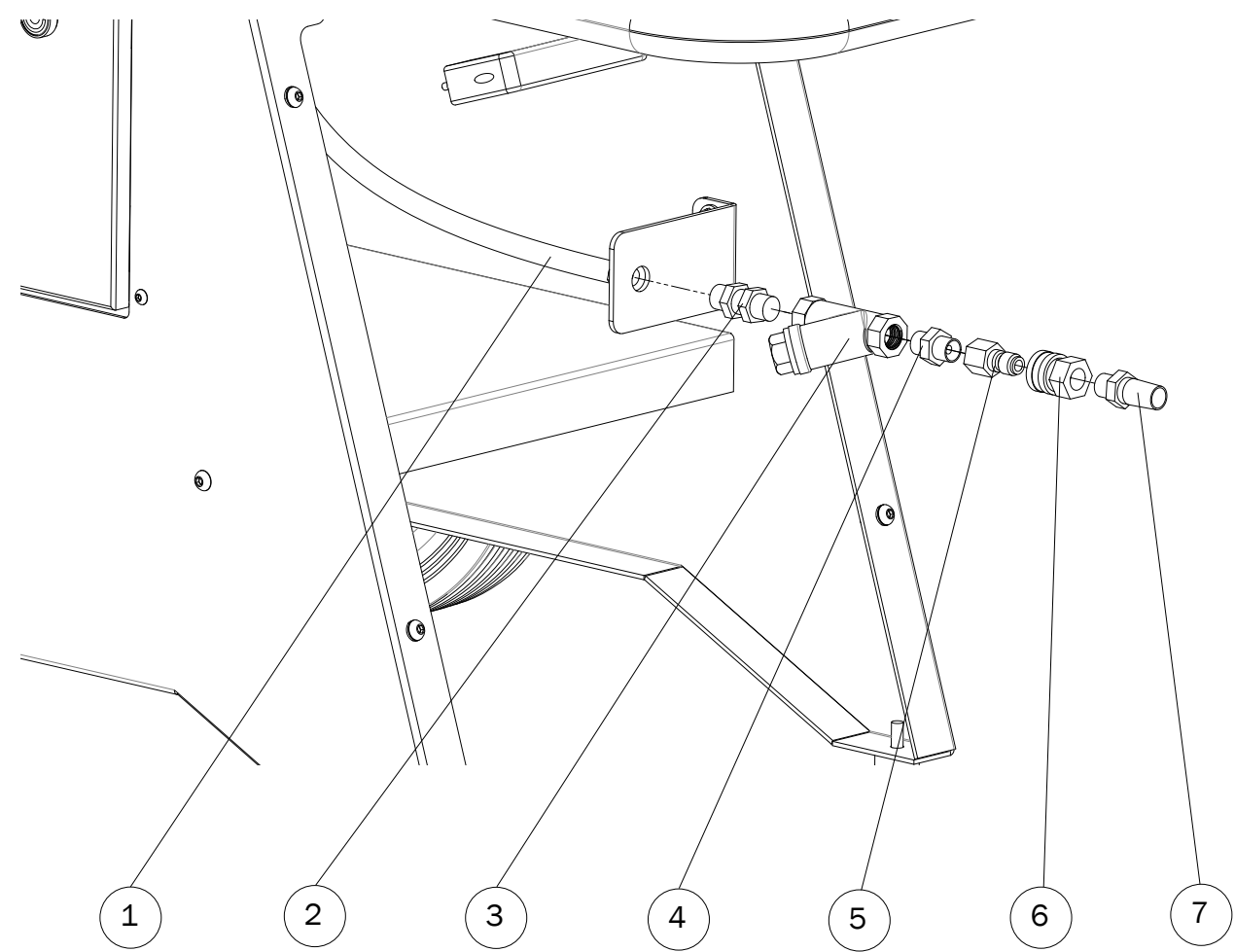
Number	Description	Part Number	Qty
1	Misting Nozzle	IQM-2	4
2	Nozzle Manifold	CM10-15-01	1
3	Finger Guard	CM10-15	1
4	Gasket	HF-DOWTY-3.8	1
5	Through Connector	HF-BHEAD-3.8Mx3.8M-S-BZP	2
6	Feed Hose	HA018	1
N/A	Nozzle Adaptor (If fitted)	HF-ADAPTOR-1.4F-3.8M-BRASS	4

PRESSURE PUMP (HP Version)



Number	Description	Part Number	Qty
1	Motor Pump Head	MT001	1
		PU001	1
2	Safety Valve	HF-UNLOADER-HXM	1
3	Gasket	HF-DOWTY-3.8	2
4	Nipple	HF-NIPPLE-3.8x1.2-BZP	1
5	Strainer	PW-YSTRAINER-1.2-BRASS	1
6		PW-CLAW-3.4M-BSP-BZP	1

INLET ASSEMBLY (LP Version)



Number	Description	Part Number	Qty
1	Feed Hose	HA0	1
2	Through Connector	HF-BHEAD-3.8Mx3.8M-S-BZP	1
3	Strainer	HF-YSTRAINER-3.8-BRASS	1
4	Nipple	HF-NIPPLE-3.8x1.2-BZP	1
5	Male Coupling	HF-QRC-M-MIDI-PROBE-3.8F	1
6	Female Coupling	HF-QRC-F-MIDI-COUPLER-3.8F	1
7	Hose Tail	PW-BR-HT-1.2BARB-3.8M	1

FAULT FINDING

Fault	Cause	Remedy
Pump running normally but pressure low on installation	<ul style="list-style-type: none"> • Inlet filter blocked or dirty. • Pump sucking air • Valve sticking • Unloader valve seat faulty • Worn piston packing 	<ul style="list-style-type: none"> • Check & clean inlet filters • Check water supply & possibility of air ingress • Check & clean or replace • Check & replace if needed • Check & replace if needed
Fluctuating pressure	<ul style="list-style-type: none"> • Inlet filter blocked • Valves worn • Blockage in Valve • Pump sucking air • Worn piston packing 	<ul style="list-style-type: none"> • Check & clean inlet filters • Check & replace if needed • Check & replace if needed • Check water supply & air ingress at joints in suction line • Check & replace if needed
Pressure low after periods of normal use	<ul style="list-style-type: none"> • Inlet filter blocked or dirty • Tips worn • Tips blocked • Suction or delivery valves worn or blocked • Worn piston packing 	<ul style="list-style-type: none"> • Check & clean Inlet filters • Check & replace if necessary • Check & clean or replace • Check & replace if necessary • Check & replace if necessary
Pump Noisy	<ul style="list-style-type: none"> • Inlet filter blocked • Air in suction lines • Broken or weak suction or delivery valve springs • Foreign matter in the valves • Worn bearings • Excessive temperatures of water 	<ul style="list-style-type: none"> • Check & Clean Inlet filters • Check water supply & connections in suction line • Check & replace if required • Check & clean if required • Check & replace if required • Reduce below 75 centigrade
Presence of oil in the water	<ul style="list-style-type: none"> • Oil seals worn • High humidity in the air • Piston packing worn 	<ul style="list-style-type: none"> • Check & replace if required • Check & reduce oil change intervals. • Check & replace if required
Water dripping from below pump	<ul style="list-style-type: none"> • Piston packing worn • Plunger retainer O ring worn • Leaking connections 	<ul style="list-style-type: none"> • Check & replace if required • Check & replace if required • Check & tighten or reseal
Oil dripping	<ul style="list-style-type: none"> • Oil seal warn 	<ul style="list-style-type: none"> • Check & replace if needed
Excessive vibration in the delivery line	<ul style="list-style-type: none"> • Inlet filter blocked or dirty • Valves probably blocked 	<ul style="list-style-type: none"> • Check & clean inlet filter • Check and replace if necessary
No water from nozzle	<ul style="list-style-type: none"> • Inlet filter blocked or dirty • Unloader valve in constant by-pass • Blocked tips 	<ul style="list-style-type: none"> • Check & Clean inlet filter • Check & turn knob to pressure • Check & clean if necessary

SERVICE RECORD

Service Date	Carried out by	Company	Notes

NOTE:

This service record will need to be provided in the event of a warranty claim

A missing or incomplete service record may result in warranty claim being declined or voided

NOTES

NOTES

Dustquip
t/a InterQuip International Ltd (UK)

+44(0) 1454 513 000

Quercus Court
Armstrong Way
Yate
BS37 5NG

www.interquip.uk
info@interquip-uk.net