

CRANE CAMERA SOLUTION

Documenting and Measuring Sites
from an Aerial Perspective

Automatically and remotely create
2D/3D models of construction sites
for visualization, BIM verification
and analysis using a crane mounted
camera.



LIEBHERR


PIX4D



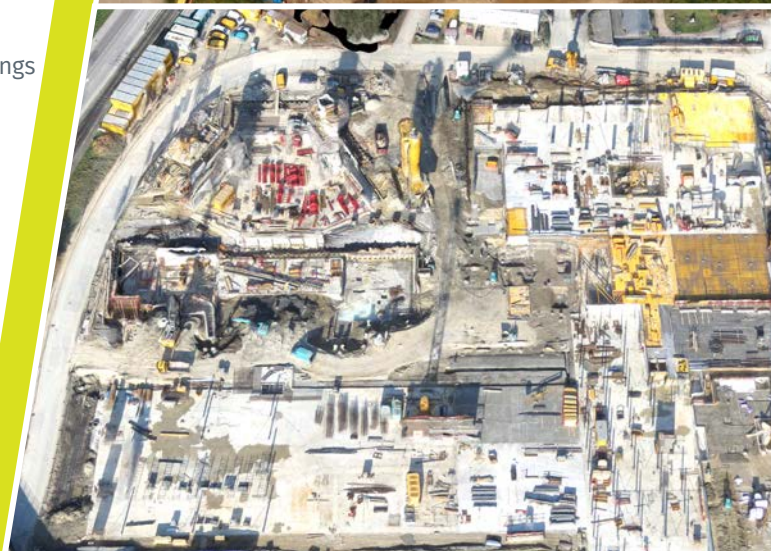
A UNIQUE SOLUTION PRODUCED IN COLLABORATION WITH LIEBHERR, THE WORLD'S LARGEST MANUFACTURER OF TOWER CRANES.

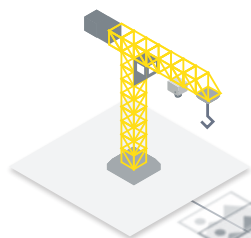
HIGHLIGHTS

- Mounted on the jib, powered by the crane
- Non-intrusive solution, no physical access required on site
- Images captured automatically during normal crane operation
- Wireless data transmitted to Pix4D cloud for automatic processing
- Deliverables available to everyone, from anywhere, on Pix4D cloud
- Advanced editing tools available on Pix4Dbim desktop software

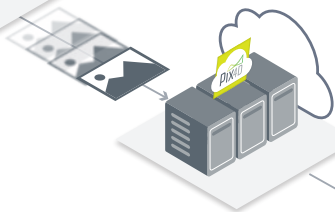
DELIVERABLES

- High resolution images for complete site overview
- Accurately scaled and geolocated orthophotos for
 - Site visualization
 - Progress monitoring
 - Construction and schedule verification
 - CAD/BIM compatible for overlay comparison with design drawings
 - Measurement of distances and areas
 - Annotations for sharing and communicating with colleagues
- 3D models for highly visual representation of project





Mounted on tower crane jib, the crane camera captures site images



Images are wirelessly transmitted to the Pix4D cloud via WiFi or a SIM card, and processed automatically to be converted into 2D maps and 3D models



Results are accessible online and can be shared





INTRODUCING MOBILE + DESKTOP + CLOUD SOLUTIONS

Adaptable professional workflows
from drone flight to finish.

Pix4D SA

EPFL Innovation Park, Building F
1015 Lausanne, Switzerland
+41 21 552 0596
construction@pix4d.com
www.pix4d.com



Liebherr-Werk Biberach GmbH

Postfach 1663,
D-88396 Biberach an der Riss
+49 73 51 41-0
info.lbc@liebherr.com
www.liebherr.com



LIEBHERR



Pix4D Construction



Pix4Dcapture Mobile



Crane camera



**Pix4Dbim
Desktop + Cloud**